

Composer HE Getting Started



Composer HE Getting Started

Control4 Disclaimer

Control4® makes no representations or warranties with respect to this publication, and specifically disclaims any express or implied warranties of merchantability or fitness for any particular purpose. Control4 reserves the right to make changes to any and all parts of this publication at any time, without any obligation to notify any person or entity of such changes.

Trademarks

Control4 and the Control4 logo are registered trademarks of Control4 Corporation. Other product and company names mentioned in this document may be the trademarks or registered trademarks of their respective owners.

Legal Notice

GNU

GNU GENERAL PUBLIC LICENSE TERMS AND CONDITIONS FOR COPYING, DISTRIBUTION AND MODIFICATION
(Section 3.b.)

You may copy and distribute the Program (or a work based on it, under Section 2) in object code or executable form under the terms of Sections 1 and 2 above provided that you also do one of the following:

Accompany it with a written offer, valid for at least three years, to give any third party, for a charge no more than your cost of physically performing source distribution, a complete machine-readable copy of the corresponding source code, to be distributed under the terms of Sections 1 and 2 on a medium customarily used for software interchange.

The complete text for this license is available on the Control4 web site at: <http://www.control4.com>.

Gracenote

Gracenote®, Gracenote logo and logotype, and the "Powered by Gracenote" logo are either a registered trademark or a trademark of Gracenote, Inc. in the United States and/or other countries.

Music and DVD recognition technology and related data are provided by Gracenote®.

Gracenote is the industry standard in Music and DVD recognition technology and related content delivery. For more information visit www.gracenote.com.

MPEG

Fraunhofer IIS and Thomson. MPEG Layer-3 audio coding technology licensed from Fraunhofer IIS and Thomson. Supply of this product does not convey a license nor imply any right to distribute content created with this product in revenue-generating broadcast systems (terrestrial, satellite, cable, and /or other distribution channels), streaming applications (via Internet, intranets, and/or other networks), other content distribution systems (pay-audio or audio-on-demand applications, and the like) or on physical media (compact discs, digital versatile discs, semiconductor chips, hard drives, memory cards, and the like). An independent license for such use is required. For details, visit <http://mp3licensing.com>. Radio Locator is the service provider of AM/FM channel list.

© 2005-2008 All Media Guide, LLC provides music and video recognition technology that provides cover art and related text that enriches the Control4 user Navigators.

Copyright

© 2012 Control4. All rights reserved. Control4, the Control4 logo, the Control4 iQ logo and the Control4 certified logo are registered trademarks or trademarks of Control4 Corporation in the United States and/or other countries. All other brands or names may be claimed as property by their respective owners. Pricing and specifications subject to change without notice.

No part of this publication may be reproduced, photocopied, stored on a retrieval system, or transmitted without the express written consent of the publisher.

Contact Information

Control4 Corporation
11734 S. Election Road
Salt Lake City, UT 84020 USA
<http://www.control4.com>

Part number: 200-00169

Composer Home Edition Getting Started (OS 2.2.1)

Copyright © 2012 Control4. All Rights Reserved.

Contents

1.	Introduction	5
1.1	Purpose.....	5
1.2	Related Documents and Resources	5
1.3	What's New in This Release?.....	5
1.3.1	OS 2.2.1	6
1.3.2	OS 2.2.....	6
1.3.3	OS 2.1.....	6
1.3.4	OS 2.0.5.....	7
1.3.5	OS 2.0.1.....	7
1.3.6	OS 2.0.....	8
1.4	Introducing Composer Home Edition (HE).....	10
1.4.1	What You Can Do in Composer HE.....	10
1.4.2	Restrictions.....	11
1.5	Important Basic Principles	11
1.6	Using Composer HE to Customize Your System.....	12
1.6.1	Monitor and Control Lights, Thermostat, Security System, and More (Monitoring View)	14
1.6.2	Manage Digital Music and DVD Collections (Media View)	14
1.6.3	Configure the Control4 System Using Intelligent Agents (Agents View).....	15
1.6.4	Program the Control4 System (Programming View)	16
2.	Getting Started.....	18
2.1	Installing Composer HE.....	19
2.1.1	Composer HE Software and Hardware Requirements.....	19
2.1.2	Procedures.....	20
2.2	Activating Composer HE	20
2.3	Starting Composer HE.....	23
2.4	Startup Options	24
2.5	Connecting to a Director.....	25
2.5.1	Connecting to a Local Director.....	25
2.5.2	Connecting to a Remote Director for the First Time	27
2.5.3	Granting Access to a Control4 Dealer.....	28
2.5.4	Connecting to a Remote Director.....	28
2.6	Registering the System on my.control4.com.....	29
2.7	Setting Up Remote Access.....	29

Composer HE Getting Started

2.8	Setting Up a 4Sight Subscription	30
2.9	Exiting Composer HE	31
3.	Exploring the Interface	31
3.1	Introducing the Composer HE Interface.....	32
3.2	Views	33
3.2.1	Monitoring.....	33
3.2.2	Media	35
3.2.3	Agents	37
3.2.4	Programming.....	38
3.2.5	Menu Options	39
3.2.6	File	40
3.2.7	Media	41
3.2.8	Tools	41
3.2.9	Help.....	45
4.	Where to Go from Here	45
5.	Glossary.....	46
6.	Index.....	50

Composer HE Getting Started

1. Introduction

Control4® Composer Home Edition (HE) is a powerful software application that lets you as the homeowner customize your Control4 system. Your Control4 Dealer has installed your Control4 system using the professional version of Composer. The Composer HE application is tailored just for you. This document applies to Control4 Operating System (OS) Release 2.2.1 (OS 2.2.1).

1.1 Purpose

The purpose of this document is to give the reader an introduction to the Composer HE application. For more detailed information, see the [Composer HE User Guide](#).

Words that appear in red are either in the Glossary or provide examples, tips, and important information.

1.2 Related Documents and Resources

Document Name	Location
Composer Home Edition User Guide (200-00170)	Web Help: http://www.control4.com/residential/products/resources/ PDF: http://www.control4.com/residential/products/resources/
Control4 System Quick Start Guide (200-00153)	PDF only: http://www.control4.com/residential/products/resources/
Control4 System User Guide (200-00001)	Web Help: http://www.control4.com/residential/products/resources/ PDF: http://www.control4.com/residential/products/resources/
Control4 System Remote Control SR-250 User Guide (200-00152)	PDF only: http://www.control4.com/residential/products/resources/
Composer Media Edition User Guide (200-00171)	Web Help: Help in the Composer ME application. PDF: http://www.control4.com/residential/products/resources/
Control4 MyHome Setup Guide for Homeowners (DOC-00004)	PDF: http://www.control4.com/residential/products/resources/

1.3 What's New in This Release?

The Control4® Composer HE software and hardware updates are detailed below. This version includes changes for OS 2.0 and later (see current versions below).

Composer HE Getting Started

1.3.1 OS 2.2.1

1.3.1.1 New Hardware and Media Support

- Added support for the new 7" In-Wall Touch Screen with Camera (C4-TW7CO-BL).
- Added support for the new HC-250 Controller (C4-HC250-BL).
- Added support for the new Door Station – Exterior (C4-DSC-EN-xx).
- Minor updates to Video Intercom.

1.3.1.2 New or Updated Sections

- Added new HC-250 Controller references to "Getting Started."

1.3.2 OS 2.2

1.3.2.1 New Hardware and Media Support

- Added support for the new 7" Portable Touch Screen (C4-TSMC7-EN-BL)
- Added support for a new HC-800 Controller (C4-HC800-BL).
- Added Intercom support with audio and video for the new 7" Portable Touch Screen with Camera.
- New UI for Intercom in the 5" and 7" In-Wall Touch Screen (audio only) and new 7" Portable Touch Screen with Camera (audio and video).
- Added support for MyHome for Android. See the *Control4 MyHome Setup Guide* for details.
- You can now create variables in the Agents view.

1.3.2.2 New or Updated Sections

- Added a reference to Internet radio and SNMP in the "Using Composer HE to Customize Your System" section.
- Added new HC-800 Controller references to "Getting Started."
- Added a reference to the PDF version in "Installing Composer HE."
- Added SNMP and Internet radio references to "View Options."
- You can now create variables in Composer HE. See *Composer HE User Guide* for details.

1.3.3 OS 2.1

1.3.3.1 New Hardware and Media Support

- Added the Apps container to the default Control4 home page; 4Store is now in the Apps container. This means that there are currently seven (7) containers on the fully-populated default Control4 Home page (Watch, Listen, Lights, Security, Comfort, Apps, and More).
- When there is only a single Thermostat in the project, selecting Comfort from the Home page automatically loads the Thermostat control UI.
- Added the ability to turn off the Ambient Light Sensor on the SR-250 (V2) from the remote's LCD menu.
- Added a new 4Store agent.

Composer HE Getting Started

- Added the ability to create custom buttons for the Navigator screens.
- The Photo Screen Saver agent can now serve a single image on all connected graphical Navigators.
- MyHome apps are now supported for mobile and PC/Tablet devices. See *Control4 MyHome Setup Guide* or *Control4 System Quick Start Guide* for details.
- Support for Internet radio. See the *Composer HE User Guide* for details.
- Support for Wireless Puck Dimmer Module and Wireless Puck Switch Module. See your Dealer for details.

1.3.3.2 New or Updated Sections

- Added the ability to change visibility and display the order of Thermostats (System Design > Properties > Navigator).
- You can now hide the Thermostat as other Navigator devices through Composer menu settings.
- Replaced most screens with new Control4 logos.
- Added an entry for the 4Store agent in "Exploring the Interface" > "Views."
- "Update Manager" has been removed. It is not supported in Composer HE.
- Added a new "Setting Up Internet Radio" section.
- Added a new "Programming with the 4Store Agent" section.

1.3.3.3 Hardware and Software No Longer Supported or Partially Supported

- No update is provided for legacy Navigators (Mini Touch Screen, 10.5" Wireless Touch Screen V1, 10.5" In-Wall Touch Screen). These devices will continue to work in compatibility mode.
- Mobile Navigator has been replaced by MyHome apps.
- After OS 2.0.6, no update will be provided for the PoE LCD Keypad.
- The Wireless LCD Keypad and WiFi Mini Touch Screen are no longer supported.

1.3.4 OS 2.0.5

Highlights:

- Support for Intercom Agent
- Support for HC-200B as a Primary Controller (functionality included in software update)

1.3.5 OS 2.0.1

1.3.5.1 New Hardware and Media Support

- New Media Player V2 (C4-MP2-E).
- Updates to HC-200B (C4-HC200B-E-B-NR-1) and HC-300C (C4-HC300C-E-B).
- Updates to HC-1000 V3 (C4-HC1000-V2-E-B). Support for rollback to Release 1.7.4 and 1.8.2 using a USB drive.
- Update to System Remote Control SR-250 (enhancements).
- New 5" and 7" In-Wall Touch Screens (C4-TSWMC5-EG-xx and C4-TSWMC7-EG-xx) with Intercom feature.

Composer HE Getting Started

- Support for Android in Mobile Navigator.

1.3.5.2 New or Updated Sections

Other than what is noted in this section, "What's New in this Release," see the *Composer HE User Guide* for new information:

- "Agents." Added Intercom agent.
- "Programming with the Intercom Agent." New 5" and 7" In-Wall Touch Screens (C4-TSWMC5-EG-xx and C4-TSWMC7-EG-xx) Intercom agent.
- "Index"

1.3.5.3 Hardware and Software No Longer Supported or Partially Supported

- 7" Wall-Mount Touch Screen (replaced by a new 7" In-Wall Touch Screen)

1.3.6 OS 2.0

Highlights:

- New Navigator interface
- Improved media management and performance
- *ZigBee® Pro* implementation for the broader market
- New or updated documentation

1.3.6.1 New Hardware and Media Support

- A new Flash interface has replaced the interface in Release 1.8.x and earlier. This interface appears on all of the graphical Navigators that OS 2.0 supports (Touch Screens and On-Screen Navigators). The *Control4 System Quick Start Guide* and *Control4 System User Guide* for OS 2.0 explain how to use this new interface.
- A new Control4 4Store™ has been added for the Navigators. Customers can purchase applications from the Web for their Touch Screens and On-Screen Navigators in their Control4 system.
- Media menu. New option 'Tag media files.'
- A new IO Extender has been added to the Control4 product line.
- A new Home Controller HC-1000 V3 has been added to the product line.
- Support for AAC and FLAC music formats.
- Support for Macros and Intercom in the Agents pane.
- Support for Lighting Scenes in the room's Properties > Navigator view.

1.3.6.2 New or Updated Sections

- The Composer and Composer-related documents have been updated and restructured for the Control4 OS 2.0 to make it easier for you to get the information you need more quickly. Most sections are now available in the online Help (application), Web Help, or PDF on the Control4 web site as listed below.
- All Help topics and sections have been restructured, reordered, and enhanced.
 - New links, bread crumbs and Glossary pop-ups have been added to the Help topics.
 - Text has been pared down for ease of use and readability.
- The *Composer HE User Guide* has been restructured to the following:

Copyright © 2012 Control4. All Rights Reserved.

Composer HE Getting Started

- *Composer HE Getting Started*. This document includes how to get set up in Composer HE. The .chm file that is included in the Composer HE software is also available as PDF on the Control4 web site (this document).
- *Composer HE User Guide* (Web Help and PDF). These files include basic and more advanced topics. The help files and PDF version are available on the Control4 web site.

1.3.6.3 Hardware and Software No Longer Supported or Partially Supported

- Home Theater Controller (functions as a Secondary Controller, but not as a Primary Controller; On-Screen Navigator continues to use the legacy interface – prior to OS 2.0).
- Media Controller (functions as a Secondary Controller, but not as a Primary Controller; On-Screen Navigator continues to use the legacy interface – prior to OS 2.0).
- Home Controller HC-1000 V1 (no longer sold by Control4 but fully supported with OS 2.0).
- Home Controller HC-500 (no longer sold by Control4 but fully supported with OS 2.0).
- 10" Wall Mount Touch Screen (will be updated to OS 2.0 but continues to use the Navigators – prior to OS 2.0. This is the last planned update for this device; future support will be limited to compatibility mode).
- 10.5" Wireless Touch Screen V1 (will be updated to OS 2.0 but continues to use the Navigators – prior to OS 2.0. This is the last planned update for this device; future support will be limited to compatibility mode).
- Mini Touch Screen V1 and V2 (will be updated to OS 2.0 but continues to use the Navigators – prior to OS 2.0. This is the last planned update for this device; future support will be limited to compatibility mode).
- System Remote Control Version 1 and 2 (will need to be replaced if used with OS 2.0).
- System Remote Control SR-250 V2 (will need to be replaced if used with OS 2.0).
- Easy Setup.
- Easy Importer.
- The AMG lookup service has been switched to Gracenote®. The Sony 777 Disc Changer uses Gracenote, but the Media Controller cannot access album, title, or artist information from AMG. CDs, however, can be imported and will show up in the Media database with a date and time stamp.
- Other Media Managers: You can use other media managers, for example, iTunes, Windows Media player, and Media Monkey to create MP3s. You can still use Composer ME and Composer HE to add files to Control4.
- Pool Controller. The Flash-based Navigator UI for pool control is not completed for OS 2.0, although the drivers and proxies remain in place in Composer. If this is important, keep at least one of the older Navigators in your system for this purpose.
- USB Restore or USB Install. Because an Internet connection is required, these USB utilities are not supported in OS 2.0. Use the 1.7.x or 1.8.2 versions of these utilities. After a restore, you can update to OS 2.0 from 1.7.4 and 1.8.2 to OS 2.0.
- Web Navigator. Internet service music and 4Store cannot be accessed from the Web Navigator. Use the Touch Screens or On-Screen Navigators.

1.3.6.4 Hardware that Doesn't Support ZigBee Pro

- Control4 System Remote Control, V1 and V2. Use a newer version that supports OS 2.0.

Composer HE Getting Started

- Audio products: Amps, Switches, Tuners, Speaker Point, etc. Use an IP connection for OS 2.0.
- Contact Relay Extender. Use an IP connection for OS 2.0.

1.4 Introducing Composer Home Edition (HE)

These Getting Started sections will help you start to customize your home network with Composer HE.

1.4.1 What You Can Do in Composer HE

With Composer HE, you can:

- Customize your Control4 system
 - from a Windows PC on your home's local network.
 - from any Internet-connected Windows PC (this capability requires a Control4 *4Sight* subscription).
- Monitor and control your
 - Dimmers, Switches, and Keypads,
 - Wireless Thermostat,
 - Security System, or
 - other devices from your Windows PC.
- Configure the Control4 devices on your system to:
 - set *LED* colors on lights and Keypads.
 - set the ramp rates and the default levels of your Control4 Wireless Dimmers.
 - set your Control4 Wireless Thermostat schedule.
 - program the device-specific buttons on your Control4 System Remote Control.
- Manage your digital music and *DVD* collections.
- Configure your system using a variety of intelligent agents (Dealer must add the agent):
 - Use Media Scenes to tie together the audio source selection, volume control, and on/off state of multiple rooms so that they work as one.
 - Use the E-mail Notification *agent* in programming to notify you when events happen on your system.
 - Create an Announcement agent to make announcements that display on Touch Screens and the On-Screen Navigator.
 - Create and modify Lighting Scenes customized to your specific needs.
 - Use the Scheduler agent to program events based on date, time of day, and sunrise/sunset.
 - Create your own Wakeup scenes.
 - Use the Macros agent to create a common programming script.
 - Other agents are available.
- Program your system to behave as you want it to, tying together all the capabilities of the Control4 environment into a single, controllable, and programmable system.

Composer HE Getting Started

1.4.2 Restrictions

While Composer HE is a fully-functional application that lets you customize your Control4 system, it does not provide all the functionality of the Composer Professional (Composer Pro) version that your Control4 Dealer uses.

Contact your Control4 Dealer if you ever need to

- create a new Control4 system.
- add *devices* to your system (or remove devices).
- create or edit drivers for third-party devices.
- install updates to system software.
- perform complex programming.

If your system has been configured to connect to Control4's *4Sight* service, your Dealer can perform many of these services over the phone and on the Web without the inconvenience of scheduling a service call.

1.5 Important Basic Principles

Your Control4® Dealer or Installer has installed and configured your Control4 system to your specifications based on your purchase agreement. While individual Control4 Dealer policies may vary, most Dealers will charge you for additional service calls unless you have a service contract.

One of the benefits of using Composer HE is that you can customize your Control4 system yourself.

Note: Should you require your Dealer's assistance, be prepared to pay for that assistance.

IMPORTANT: When using Composer HE, you are configuring your own Control4 system. While this gives you a great deal of capability, it also carries some risk for which you must be prepared to take responsibility.

This section describes some of the basic principles when using Composer HE on your Control4 system. It is important to understand these principles and accept the risk and responsibilities that come when you customize your system.

1. **Changes you make in Composer HE are effective immediately.** When you connect to *Director* and customize your system, the changes are effective immediately. Whether you're changing LED colors or Dimmer *ramp rates*, performing complex programming, or creating *agents*, Director immediately modifies your system configuration.
2. **There is no 'Undo' capability.** When you make a change that you don't like, there is no way to "undo" that change. You have to configure or program the project back to the way it was if you don't like the changes you've made, or return to a backup copy of the project you've previously saved. Because of this, Control4 recommends that you always make a backup copy when you save your project.
3. **You can Save and Restore your Control4 system.** An important capability provided in Composer HE is the Backup function; this function saves your system configuration to a project file on your PC. If you need to restore the system to that state, you Load the saved project file.

Composer HE Getting Started

4. **When you Load a project file, you reset your current system configuration.** Loading a project file on your system clears and resets the current system configuration. You will lose any customizing you've done, as it's not contained in the project file you choose to load.
5. **Project files can be backed up with and without media.** When you back up your project file, you can choose to create the Backup project with and without media. If you Load a project file that doesn't have media associated with it, you will lose the media that was associated with your current system. It's always good practice to click **Backup with Media** when you exit Composer. If you ever need to restore your system, your Media Database is still intact.
6. **You can separately export media and playlists.** You can export the Media Database information for each media source on your Control4 system. You can also export *playlists*. When you import media and playlists, the current media list for that media source and the current playlists will be cleared and replaced with the media in the file you are importing.
7. **Backups with Media and Exported media lists only include the *Media Database* information.** Backups and Exported media lists contain the Media Database information used by the Control4 system. These lists do not contain the actual media (*MP3*) files. To back up the media files, you should separately back up the media source (Controller, *USB* storage, or network file storage) when you exit Composer HE.
8. **Programming can be associated with multiple events.** Control4 system programming lets you program your system to perform similar tasks in a variety of ways. For instance, you can set the LED color as a device property, but you can change it in programming.

Note: Pay close attention to your programming changes so that you don't inadvertently change the behavior of your system in an undesirable way.

9. **Your system may become inoperable due to certain types of changes you can make using Composer HE.** It is possible that you could make your system inoperable using Composer HE. In most cases, you can recover your system using a backup project file. However, if you can't recover your system using a backup project file, contact your Control4 Dealer for assistance. Your Dealer can restore your system back to an operational condition.

1.6 Using Composer HE to Customize Your System

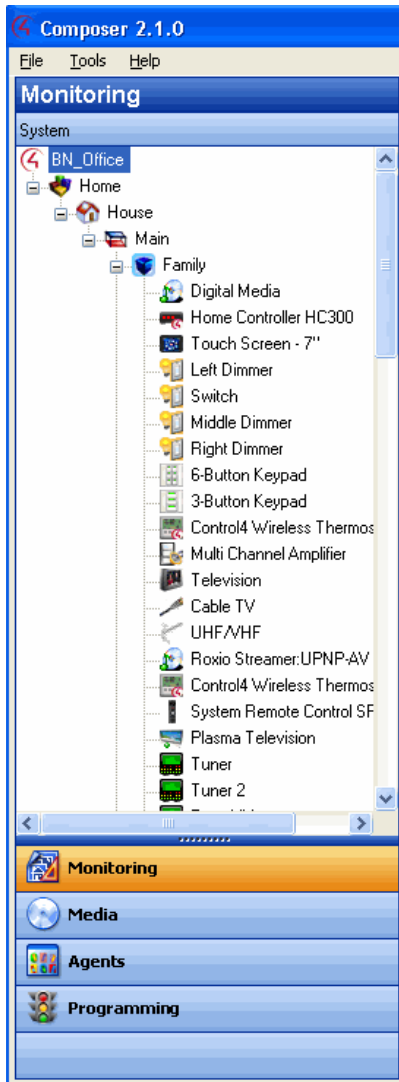
The Control4® Composer HE sections in this document provide introductory information to help you get acquainted with Composer HE.

Refer to the *Composer HE User Guide* on the Control4 web site for additional information.

Composer HE views:

- Monitoring
- Media
- Agents
- Programming

Composer HE Getting Started



Composer HE Getting Started

1.6.1 Monitor and Control Lights, Thermostat, Security System, and More (Monitoring View)

1. Click the **Monitoring** view in the Composer HE main window. Two (2) pages in this view show the List View screen, which gives you status information for all system devices at a glance: List View and Properties. If the Control4 system is controlling/monitoring *device* power, the device is shown as Red when off, and Green when powered on. The light level, temperature, security system status, and other information are shown on this screen also.
2. Double-click any **device** in List View to display the controls associated with the device.
3. Click the **Properties** tab to access the Properties page for all system devices. Select the specific device you want to configure from the project tree view. For example:
 - Configure the LED colors of your Keypads.
 - Configure the LED colors, *ramp rates*, and preset level of your Dimmers.
 - Configure/program the ABCD buttons on your System Remote Control for each AV device.
 - Configure/program the Thermostat and its schedule.

1.6.2 Manage Digital Music and DVD Collections (Media View)

1. Click the **Media** view. The Media Source devices are shown.
2. Select any source device to modify the media list for that device.
 - Scan for new music on your network devices: configured USB-attached storage device or a configured network file store on any network-connected PC.
 - Scan for a new *DVD* in a configured Sony Disc Changer.
 - Search for media information using the media lookup service.
 - Manually customize your *MP3*, *FLAC*, or *AAC* albums and songs.
 - Manually add, edit, or delete your DVD information.
 - Search for the channel lineup on your cable, satellite, or off-air programming service. Manually edit your channel lineup.
 - Create *playlists*.
 - Export media lists for backup purposes or import media lists.
 - Export playlists for backup purposes or import playlists.
 - Set up Internet radio (your Dealer can do this for you).
3. To add new MP3 files to your collection, copy the MP3 files to a configured storage location on your USB-attached storage device or a configured network storage device.
4. To add a new storage device, have your Control4 Dealer add it to the Composer project and configure it for your use.
 - The network address of the Controller which is used for your MP3 files is \\<ipaddress>\media\audio where <ipaddress> is your Controller's TCP/IP address (for example, 192.168.0.100). To copy MP3 files from your PC to the Controller, open that directory in your Windows Explorer and copy the files to a directory in that location.

Composer HE Getting Started

- After you copy the files to the storage location, use the **Media** view to select the storage device, and then select **Scan** to add them to your Media list.
- Customize, if necessary, the metadata for the newly-added media.

1.6.3 Configure the Control4 System Using Intelligent Agents (Agents View)

Click the **Agents** view in Composer HE.

These are the available agents that you can configure:

- **4Store**—Lets you set up and manage 4Store logins, apps, themes, and storage.
- **Announcements**—Create an announcement to display on the Touch Screens, MyHome apps, or On-Screen Navigators.
- **Custom Buttons**—Shown on the *Navigators*. You can create up to four (4) screens with six (6) buttons each to show on the Navigators in specific rooms or in all rooms in the system. Use programming to link the Custom Button events to the actions you'd like to perform.
- **E-mail Notification**—Lets you send e-mail to any Internet mail address. Use Programming (requires a *4Sight* subscription and *remote access* enabled on the *Controller*) to send out the notification.

Notes:

1. Remote Access is required to use the E-mail Notification Agent. See the Composer Pro Getting Started Help for details about Remote Access.
 2. Avoid setting up e-mail notifications for events that occur frequently (e.g., when a Motion Sensor detects motion). If the email notification trigger event occurs too often, it will cause the system to become sluggish.
- **Intercom**—Sets up the Intercom system for 5" or 7" In-Wall Touch Screens or the new 7" Portable Touch Screens.
 - **Lighting Scenes**—Customize Lighting Scenes to your specific needs.
 - **Macros**—If you create a programming script to use in several places, you can create a macro rather than create a new programming script every time.
 - **Media Scenes**—Create and configure Media Scenes. Media Scenes are used to link rooms in your system for audio functionality. You can activate and deactivate Media Scenes using the Agents or Programming views.
 - **Rhapsody**— (Requires a Rhapsody account).
 - **Scheduler** - Schedule events to which you can attach programming. Scheduler *events* can be based on specific time of day, day of week, and sunrise/sunset times.
 - **Screen Saver**—Create a new Screen Saver to use in your Touch Screens and On-Screen Navigators.
 - **SNMP Configuration**—Use to manage Control4 home networks remotely using SNMP.
 - **Timer**—Create a timer to enable or disable devices at set times.
 - **Variables**—Create variables to use in programming. You can create number variables (numeric), true/false variables (Boolean), and text variables (string).
 - **Video Wall**—Create this agent when you want to control several TVs mounted on a wall.
 - **Wakeup**—Use the Wakeup agent to incorporate your music selection, light level and ramp rate, and temperature control to wake you up.

Copyright © 2012 Control4. All Rights Reserved.

Composer HE Getting Started

See “Agents” or the *Composer HE User Guide* for details.

1.6.4 Program the Control4 System (Programming View)

Click the **Programming** view in Composer HE. Programming actions occur based on specific events in the system to make it easy to use and powerful.

Here are some basic concepts to understand when programming:

- **Devices**—Each device in the system is seen from two (2) perspectives. Things that happen on the device (*event*) and things that can be done to/using the device (*action*). The Device Events pane on the left side of the Programming view shows the events for each selected device. The Device Actions pane on the right side shows the actions for each selected device. Devices include not only the physical devices on the system, but also the logical devices including rooms and agents.
- **Events**—When anything happens on the system, it is an event. Most system events can have programming attached to them. Notice the specific events that occur on each device as you select devices. For example, the Control4 Wireless Dimmer has a bunch of events associated with it, for example, Top Button Pushed, Top Button Released, Bottom Button Pushed, Bottom Button Released, Level Changes, and so on. The event is the fundamental trigger used in Control4 system programming.
- **Actions**—An action is a specific task that the system can perform. Actions are also device specific. For example, the Control4 Wireless Dimmer can be turned on/off or toggled, you can set a specific dim level and ramping rate, configure LED colors, and force the button press/release events to fire.
- **Commands**—A command is a specific action inserted into the programming script (to the Script pane).
- **Conditionals**—Most devices can be evaluated on a conditional basis. For example, the conditionals that you can use on the Control4 Wireless Dimmer are: is the light on, is the light off, is the light level greater than, equal to, less than, or not equal to a specific level? The power of conditionals lay with your ability to use conditionals to create programming which starts with and evaluates current conditions, and then proceeds accordingly.
- **Script**—The script is the ordered set of conditionals and commands which you associate with a specific event. When an event occurs, the Control4 system executes the script associated with the event.
- **Variables**—You define variables when you create a Variables agent in the Agents view. There are three (3) types of variables which you'll use in programming:
 - **Numeric**—Use Numeric Variables for counting up, counting down, or setting values based on a number.
 - **Boolean**—Use Boolean Variables to set and track true/false values. For example, when the Scheduler sunset event fires, you can set a user-defined Boolean variable called Night_Time to **true**. When the Scheduler sunrise event fires you can set Night_Time to **false**.
 - **String**—A String Variable contains a text string. You can set and evaluate string variables in programming. For example, you can set a user-defined string variable called Selected_Playlist equal to "Exercise Music."
 - **Room Variables**—In addition to the user-defined variables that you create, the system also has system variables attached to each room which you can use when you program your

Composer HE Getting Started

system. Room Variables are most commonly accessed as commands and conditionals from the Room device. However, a full set of Room Variables is also available for each room on the system.

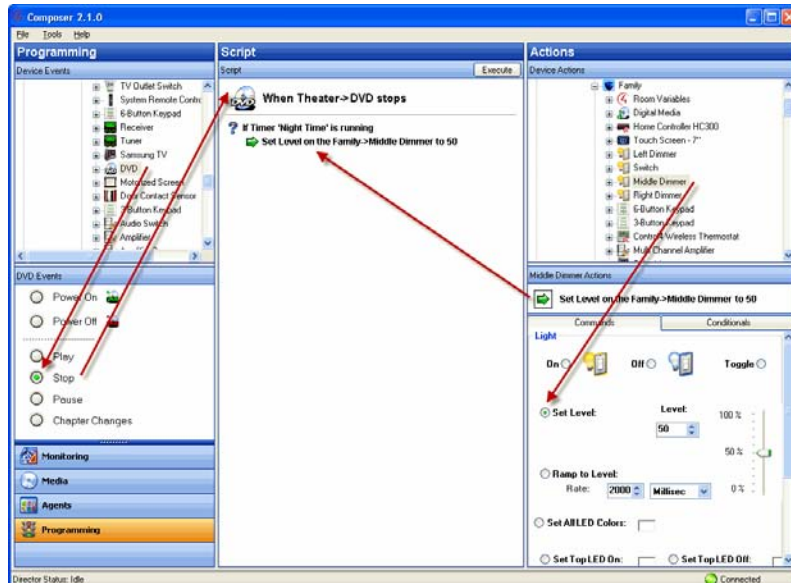
- **Programming Control**—Use the Programming Control commands to delay or stop script execution.

Example: Here's an example that demonstrates some of these concepts. When you start playing a DVD in the Living room, if it's evening, you want to ramp the lights in the room gradually to 15%. When the DVD is stopped or paused, you'd like the lights to automatically ramp up to 50%. When the DVD plays, you want to set the Dimmer level to 15%. Can you identify from this described behavior what the events, conditionals, and commands are?

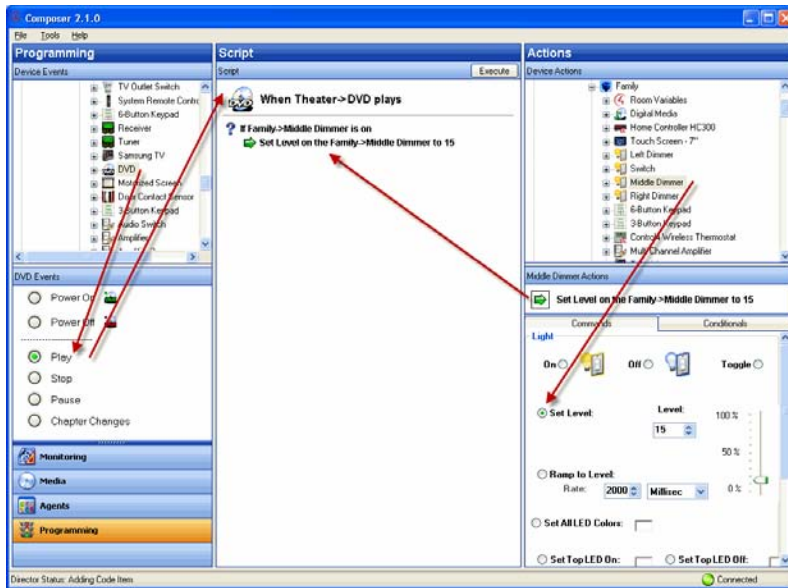
The following steps demonstrate how you'd create the programming for the previous example.

1. There are three (3) Events: DVD Play, DVD Stop, and DVD Pause.
2. The only Conditional to check is **night time**.
3. Actions are added to the Script pane by either double-clicking or dragging and dropping the Action's arrowhead or question mark into the Script pane.
4. The Commands are Dimmer ramp commands.
5. You can drag and drop a Command arrowhead on top of a Conditional question mark to "nest" (or indent) the Command.

The following examples show Stop and Play commands. More detailed information about programming is in the *Composer HE User Guide*.



Composer HE Getting Started



2. Getting Started

Control4® Composer Home Edition (Composer HE) is the software you use to monitor, control, and personalize your Control4 system to fit the needs and lifestyle in your home. As you use Composer HE, your understanding of the possibilities of automation in your home will grow.

Composer HE is a Windows XP-based PC program that has an intuitive drag-and-drop interface which gives you the opportunity to do simple programming, such as changing Lighting Scenes, modifying custom buttons, and controlling behaviors between devices.

The brains and heart of the system is the Control4 *Controller*, for example, Home Controller HC-300. The Controller communicates with Control4 products and third-party products compatible with Control4 to enable home automation and interaction of individual devices. Whenever the term "Controller" is referenced in this documentation, it refers to any Control4 product that contains the Director software, for example, Home Controller HC-200, HC-250 Controller, Home Controller HC-300, HC-800 Controller, or Home Controller HC-1000.

These *Composer HE Getting Started* sections give you information about how to start and begin to use the Composer HE software application.

You will learn how to

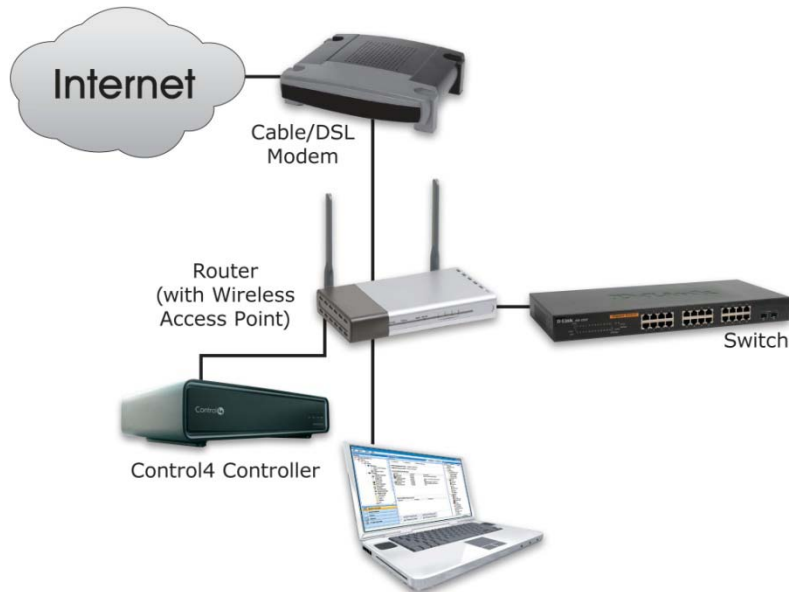
- install Composer HE.
- activate an account for Internet access.
- start and close Composer HE.
- connect to a Director.
- begin to use the Composer HE interface.
- Use the views and menu options.

Copyright © 2012 Control4. All Rights Reserved.

Composer HE Getting Started

2.1 Installing Composer HE

The following illustration shows how a small home network might be set up. The laptop shows the Control4® Composer software installed on it. Your Control4 Installer may have set up a network similar to this one.



2.1.1 Composer HE Software and Hardware Requirements

- Control4 Primary Controller (for example, Home Controller HC-300) added and configured to the *Composer* project
- PC software and hardware:
 - Composer HE software
 - Microsoft.NET 1.1 and Support Pack 1 (installation automatically started from Composer Install either from CD or web)
 - Microsoft operating systems supported
 - Windows XP and Service Pack 2 (Home or Professional)
 - Windows Vista
 - Windows 7
 - 500 MHz processor or higher
 - 256 MB RAM
 - 80 MB hard disk space
 - Video card and monitor supporting resolution of 1024 x 768 or higher
 - Keyboard
 - Mouse
 - 1–2 Ethernet (CAT5) cables
- TCP/IP-based home network (DSL/Cable Modem, Control4 Secure Gateway, router, or switch) to connect the PC to the Controller

Copyright © 2012 Control4. All Rights Reserved.

Composer HE Getting Started

- Internet connection (broadband required when using Remote Access or retrieving cover art)
- Windows Media Player 9
- *wireless access point* (WAP) that supports 802.11 b/g/n (optional)
- Installation
- Registration

2.1.2 Procedures

To use Composer HE with your Control4 system:

1. Install the Composer HE software on the PC you will be using to configure your Control4 system. Both your PC and your Controller must be connected to your TCP/IP-based-home network. Composer HE is provided to you by your Control4 Dealer or Installer via a CD or an Internet URL path for download.

Tip: Control4 recommends that you install Composer HE on a PC laptop; laptops are very handy to move about the house as you set up your project and test your devices.

2. Register and create a user account on Control4's my.control4.com Internet site to activate your Composer HE software.

To Install Composer HE:

1. Insert the Composer HE *CD* on your PC, or download and run the installation program from the URL provided to you by your Control4 Dealer or Installer. The Installation CD contains the Composer HE software and this *Composer HE Getting Started* as online Help (also available in PDF on the Control4 website).

The *Composer HE User Guide* (the companion document to this document) is available also on the Control4 website in web help or PDF formats.

2. Select **Install Composer**.
3. Follow the instructions provided to install Composer HE to your PC.
4. When prompted by the Install program, select continue to install the 'Remote Access Network Tunnel Adapter' on your PC.
5. When the installation finishes, click **Finish**.
6. A Composer HE icon displays on your PC desktop. Click the **icon** to start Composer HE.

2.2 Activating Composer HE

Prerequisites

Before you can use Control4® Composer HE, you and/or your Installer need to

- create an account at my.control4.com.
- register your Controller for Remote Access.
- activate your Composer HE software.

The first time you start Composer HE, the system prompts you for your myControl4 *4Sight* account information and a Composer HE subscription code. 4Sight is Control4's subscription Internet service.

Composer HE Getting Started

The 4Sight Internet connection can be very handy to use when you're away from home and you want to receive e-mail notifications or configure something remotely using the Web Navigator.

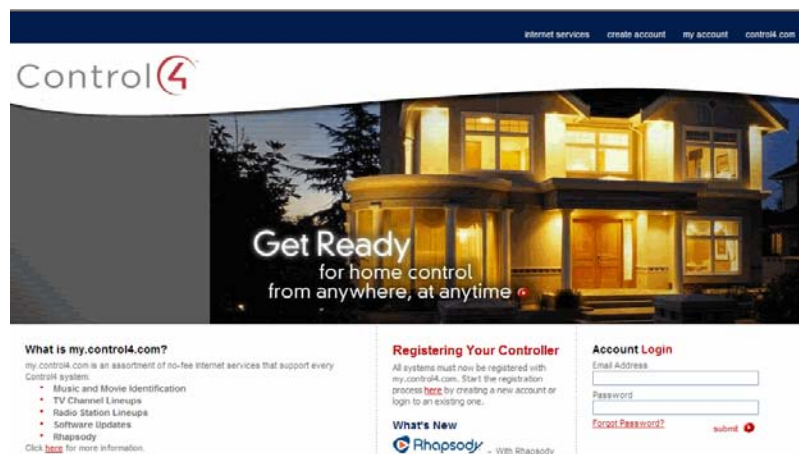
To activate Composer HE, create a my.control4.com account at <http://my.control4.com>. There is no charge to create this account.

Note: This setup may have already been done for you by your Control4 Dealer. If you don't know whether this is true, check with your Dealer either to obtain your account information (account name, email address, password, and registration code) or to verify whether this needs to be done.

To use a 4Sight Internet connection, e-mail agent, and Web Navigator services for one (1) year, you may use the 1-year 4Sight subscription included with each copy of Composer HE. Thereafter, you may want to purchase an annual 4Sight subscription from your Control4 Dealer.

To set up your account:

1. Using your Internet browser, go to <http://my.control4.com>.



2. Click the link under **Registering Your Controller** or click **create account** at the top of the page to create your new account.

Composer HE Getting Started

3. At the Create New Account page, fill out the account information. Make a note of your **Account Name**, **E-mail Address**, and **Password** for future reference. You will need this information every time you log in.
4. Click **Create Account** to create your account.
5. The software asks you if you want to register your Controller. If you want to do this now, go to the next step.

To register the Controller:

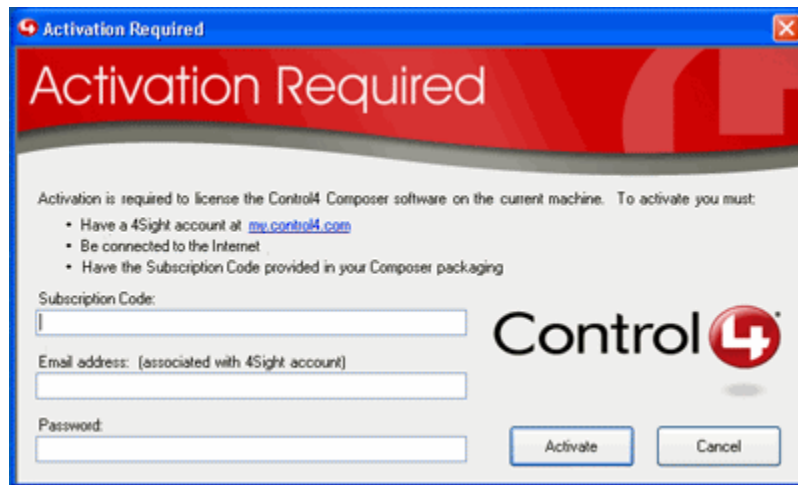
1. At the account Home page, click **Register Your Controller** to set up *remote access*.
2. On the Complete Registration page, click **Yes**.
3. On the Controller Registration Confirmation page, make note of the 10-digit registration code that displays. This code is time-sensitive and must be used within 10 minutes. It provides a temporary code used to exchange security parameters and set up the ability to create a secure connection between my.control4.com and the Controller.
4. Go to a Navigator (such as a Touch Screen or On-Screen Navigator), and select **Info > Remote Access**.
5. On the Navigator, click the **text box** in Enter code, and then enter or paste the **10-digit registration code** when the keypad appears.
6. When you are finished, select or press **Activate**. When activation is completed, you can use all media services, such as the online media recognition service.
7. (Optional) While you are here, you may want to enable Remote Access. Select **Remote Access > Enable**. This allows Control4 access for system updates, and is a required step in enabling Remote Access to your system (which also requires a 4Sight subscription, sold separately).

To activate your Composer HE software:

The first time you start Composer HE, the software asks you for a subscription code.

1. From your PC desktop, double-click the **Composer Home Edition** icon to launch Composer HE.
2. Enter the subscription code provided with your Composer HE software.

Composer HE Getting Started



3. Your Composer HE subscription code will be similar to DC89-D37F-D528-7A4A, four 4-character sets separated by dashes. Enter the subscription code provided with your Composer HE package.
4. Enter the e-mail address and password associated with your 4Sight account.
5. The E-mail address and Password must be the credentials associated with your 4Sight account at <http://my.control4.com>.
6. Click **Activate**.

2.3 Starting Composer HE

Prerequisites

The first time you start Control4® Composer HE, the system prompts you for your 4Sight account information and a Composer HE subscription code. 4Sight is Control4's subscription Internet service. Be sure you register your account first so you can get this number, and write the number down when you get it.

To start Composer HE:

1. You can log on two (2) ways:
 - Double-click the **Composer HE 2.x.x** icon on your PC desktop.
 - From the Start menu, select **All Programs > Control4 > ComposerHE 2.x.x**. The startup screen appears.

Each time you start Composer HE, you need to connect to your Control4 system either locally (click **Director on Local Network**) or remotely (**Remote Director**). On the Control4 system, the Primary Controller is the system to which you connect from your PC.

Note: To connect to a Remote *Director*, first you must set up Remote Access. See "Activating Composer HE."

Composer HE Getting Started



2. Connect to a Director.

2.4 Startup Options

Use the Control4® Composer HE software installed on your PC to start the Composer HE application.

Prerequisites

Ensure that you've registered and activated your account before you start Composer HE for the first time. See "Activating Composer HE" for details.

To start Composer HE:

1. From your PC desktop, double-click the **ComposerHE <version>** icon to launch Composer HE.
2. Enter the subscription code provided with your Composer HE software. The first time you start Composer HE, the software asks you for a subscription code.
3. Control4 **Controllers** contain the **Director** software that directs the Control4 system. When starting Composer, you choose the type of Composer connection (local or remote) you want, and your Controller's IP address.

The Composer Startup screen presents these connection options.

- **Director on Local Network**— Choose this option when working connected to the home network (inside the firewall). You can set up and design the project, make connections, add media, and program the system.
- **Remote Director**— Choose this option when working remotely, but connected to a home network from the Internet (outside the firewall). You can change your Control4 system as if you were hooked up to the Local Network (second option). This requires Remote Access. See "Activating Composer HE" for details.

4. Connect to a **Director**.

Copyright © 2012 Control4. All Rights Reserved.

2.5 Connecting to a Director

Control4® *Controllers* contain the *Director* software embedded in the Controller that controls the communication of devices and allows automation of your Control4 system. When you connect to a Director, you can define and customize the project for the system.

Composer HE lets you access, create, and update project configuration. When you start setting up your Control4 system, you need to connect to a Director using either a local connection or a remote connection.

Also, you have the option to make a backup on your PC by using the **Backup As** or **Backup** option from the File menu to save the project file. When you back up a project file, it is backed up by default to the "My Documents" directory on your PC.

This section describes how to

- connect to a Local Director.
- connect to a Remote Director.
- grant access to a Dealer for remote access.

Prerequisites

1. Ensure that you set up your account at <http://my.control4.com>.
2. Ensure that you have the correct setup, depending on how you want to connect. You can connect to Director two (2) ways:
 - **Local Director.** Your PC must be on the same IP-based local area network as your Control4 system.
 - **Remote Director.** Your Control4 system must be configured to use 4Sight Remote Access.

Note: If a Composer HE license is associated with this product, a 'Renew Composer Registration' screen may appear before you can connect to Director. If it does, you must type your email address, password, and then click **Renew**.

2.5.1 Connecting to a Local Director

To connect to a Local Director:

Connecting to a Director on the local network lets you configure current settings, download a new project, or back up an existing project to a file on the PC. Every Director has an associated network address.

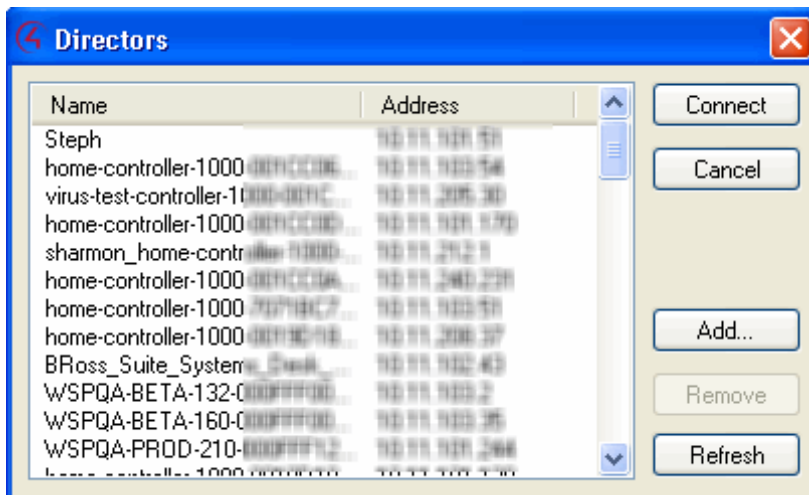
When you start Composer and connect to a Local Director, you are making "live" changes to the hard drive on the Controller; and every time you connect to that Director, you see your project configuration.

1. Start **Composer**.

Composer HE Getting Started



2. Click **Director on Local Network**. The Directors dialog appears when you choose to connect to a local Director.



The options on this page include:

- **Connect.** Lets you connect to the Director that resides on the Controller connected to the local network.
- **Cancel.** Cancels and closes the Director dialog box.
- **Add.** Opens a dialog box that lets you add the Director's Address of the Controller to which you are trying to connect.
- **Refresh.** Lets you update the Director list to display recently-added Directors.

Composer HE Getting Started

3. From the dialog's list, select the IP address of the *Primary Controller* to access, and click **Connect**. The main page appears with the Monitoring and List View panes.

2.5.2 Connecting to a Remote Director for the First Time

If you've already connected to Director before, go to "Connecting to a Remote Director" (below) if you want to connect remotely.

To connect to a Remote Director for the first time:

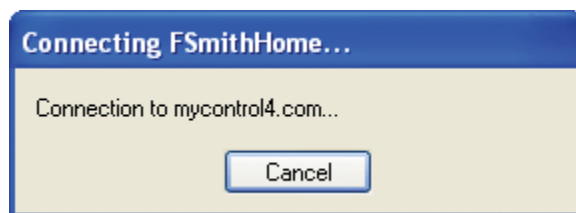
When you connect to a Remote Director, you are making "live" changes to a remote system Controller. Changes are communicated over an Internet connection rather than a local network connection.

Note: This type of connection is not available until the initial configuration is complete. It requires either a temporary connection requested by Control4 Technical Support and granted by you, or a constant connection to the system made available by activating a 4Sight subscription.

- **Temporary Connection:** If you are registered on my.control4.com, your Controller registration is completed, and you have remote access. Then the system is accessible for temporary remote access, and will be made available to Technical Support personnel when you complete the Check In process.
- **Constant Connection:** If you've purchased a *4Sight* Internet Services subscription and have activated the subscription for your Controller through my.control4.com, then the system is always online and accessible for immediate remote access.

Note: You may revoke access rights to Control4 Technical Support or your Control4 Dealer using my.control4.com at any time; this is not recommended, however, as it will interfere with needed regular updates.

1. Start **Composer**.
2. Click **Remote Director**.
3. After your system has been configured for 4Sight Remote Access, you can connect to it using Composer HE from any Internet connection by entering your 4Sight Account Name, E-mail Address, and Password.
4. From the Director dialog that appears, choose the Director's network address for the Controller you are setting up, and click **Connect**. Choosing the Local Director is essential to Remote Access setup, as it defines to the system the Controller you want to use to log in to the Remote Access Service. This step is done at your home to give you remote access in your system. If necessary, click **Add** to add the address manually.



5. From the Tools menu, choose **Account Services**.

Composer HE Getting Started

6. If your system's current status displays as Registered, you can choose the **Check In** option at the bottom of the screen to initiate a connection when requested by your Control4 Dealer or Control4 Technical Support. The next time your system performs a routine check-in, a connection will be maintained until the Composer connection exits. If your system's current status displays as Unregistered, complete the steps provided on the screen.

2.5.3 Granting Access to a Control4 Dealer

To grant access to a Control4 Dealer:

1. To grant your Control4 Dealer access to your Control4 system, give the Dealer access on your user list at my.control4.com.

Notes:

- Granting a Dealer remote access rights to your account does not require that either you or the Dealer reveals any confidential passwords.
 - See "Setting Up Remote Access" and "Registering the System on my.control4.com" for information.
2. On the internet, go to <http://my.control4.com>, enter your e-mail address and password, and then choose **Submit**.
 3. When you access your my.control4.com screen for the first time, follow the on-screen prompts to enter your 4Sight Subscription Code, and then click **Activate**. The 4Sight Subscription Code is a series of digits. Find this code on the card you received when you purchased your Control4 4Sight Subscription.
 4. When successfully activated, you will see an Account Subscription confirmation screen. The screen shows the information you used to activate your remote account. When you finish reviewing the confirmation screen, click **OK**.
 5. If you are connected to Web Navigator, choose **Cancel** or **Close**.
 6. In the My Account view with **Account Administration** selected in the left pane, click the **Profile** link, and verify the **Dealer of Record** information.
 7. With Account Administration still selected, click the **Users** link.
 8. At the bottom of the page, check this option: **Allow your dealer (your dealer's name) to remotely access your system**.
 9. To continue and connect remotely, see the next set of steps.

2.5.4 Connecting to a Remote Director

To connect to a Remote Director:

1. Start **Composer**.
2. Click **Remote Director**.
3. After your system has been configured for 4Sight Remote Access, you can connect to it using Composer HE from any Internet connection by entering your 4Sight Account Name, E-mail Address, and Password after your connection to 4Sight has been established.
4. When the Select Remote Account dialog appears, choose the account you want to access, and click **Connect**. If the MyControl4 account name is not in the list:
 - a. Click **Add** to add the account name and click **OK** on the dialog that appears. This is the Account Name you created during registration at my.control4.com.
 - b. When the Select Remote Account box displays again, highlight your account, and click **Connect**.

Composer HE Getting Started

5. When the Connect <E-mail Address> dialog appears, enter your **E-mail Address** and **Password**, and then click **Connect**. A screen appears indicating that your account, e-mail address, and password are being verified, which may take several minutes to complete. When authenticated and connected through the MyControl4 Remote Access Service, the list of Directors available for connection displays.
6. Select the Director you want to connect to, and click **Connect**.
7. When the remote connection is established, Composer opens in the Monitoring view. Composer functions normally as if you were connected to a local Director, allowing you to configure, program, and troubleshoot your system.

2.6 Registering the System on my.control4.com

Go to <http://www.my.control4.com> to register your Controller.

1. Create your new account.
2. Register the Controller.
3. Enable Remote Access on the Navigators.

See “Activating Composer HE” for details.

2.7 Setting Up Remote Access

When you set up *remote access* for a Control4® system, you can log in to *4Sight* from anywhere in the world and monitor or control settings in your home. You can use the *4Store* also.

Prerequisites

Use the Navigators or my.control4.com to set up Remote Access. See also “Activating Composer HE.”

To set up Remote Access from a Navigator:

1. From the Control4 Home page of a Touch Screen or On-Screen Navigator, choose **More > Settings**.
2. Select or press **Remote Access**.
3. Select or press **Remote Access > Enable**.

Notes:

1. When you enable Remote Access, if you have a 4Sight subscription for this system (see “Setting Up a 4Sight Subscription”), you can enter your e-mail address and password, and then securely log in to the home network from any Internet connection in the world. When you are in 4Sight, you can use the Web Navigator to monitor and control the lights, change the temperature (warm or cool the home remotely), or check whether any doors or windows were left open. Refer to “Using the Web Navigator” in the *Control4 System User Guide* on the Control4 website for more information.
2. If your system is registered on my.control4.com and the Controller is registered, the system is accessible over *remote access* (without a 4Sight subscription) after a request by the Control4 Dealer or Control4 Technical Support has been made to access the system on my.control4.com, AND you instruct the Controller to “check in” which you do from the Navigator’s Control4 Home page, select **More > Settings > Remote Access**.

Composer HE Getting Started

2.8 Setting Up a 4Sight Subscription

Use the Control4® my.control4.com account to activate a subscription and set up a new account.

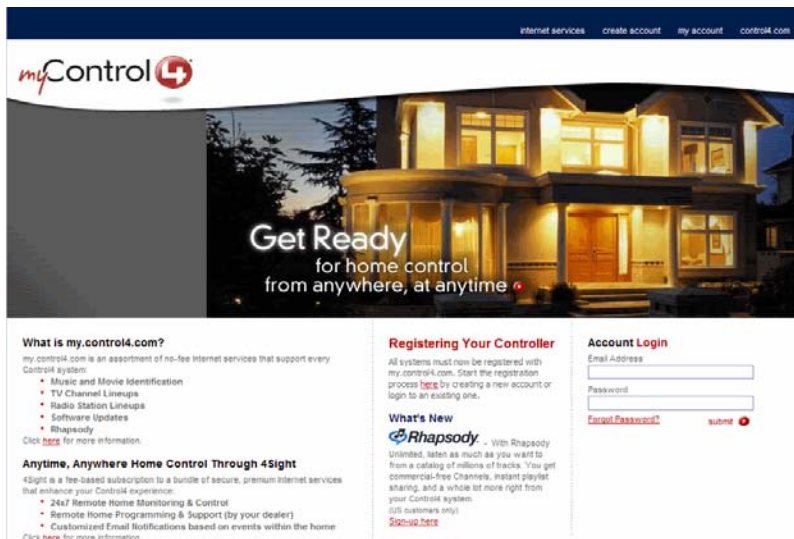
4Sight lets you or your Control4 Dealer access your system remotely, or you can use the **4Store** to purchase applications.

Prerequisites

Obtain a **4Sight** subscription for your system, and then complete the following setup.

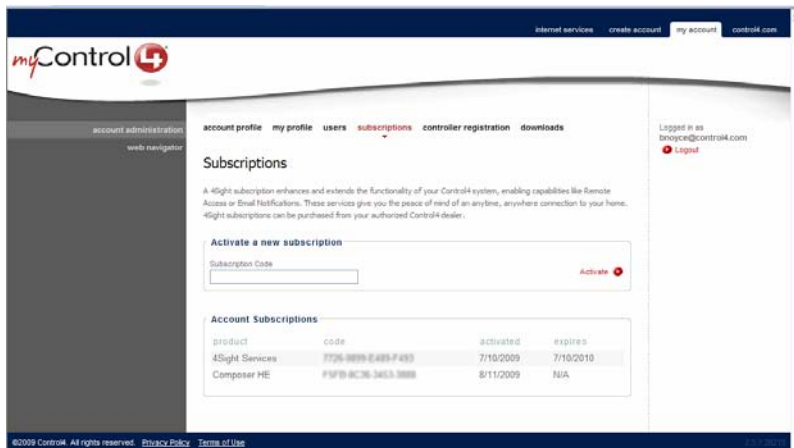
To set up a 4Sight subscription:

1. Obtain the 4Sight Subscription code for your system from your Control4 Dealer. (If you've set up the subscription yourself, you have the code.)
2. Log in at <http://www.my.control4.com> under Account Login using your my.control4.com e-mail address and password, and click **Submit**.



3. From Account Administration, select the **subscriptions** link.
4. Enter the subscription code, and then click **Activate**.

Composer HE Getting Started



2.9 Exiting Composer HE

To exit the Control4® Composer application click **File > Exit**. The software asks you if you want to save a Backup of the project. Click **Backup** or **Backup As** to save the project. Control4 recommends that you back up any changes you make to your project.

3. Exploring the Interface

The Control4® Composer interface and wizards are designed to help you:

- Monitor your Control4 system
- Maintain your media
- Add or modify custom programs

This screen shows the main Composer HE interface.



Composer HE Getting Started

To take advantage of Composer HE features, learn about the following options in Composer:

- Views
- Menu options

3.1 Introducing the Composer HE Interface

The Control4® Composer HE interface is divided into several panes (as shown below, for example, Monitoring and List View).



The menu bar (File, Tools and Help) appears at the top of the window.

The upper left portion of the window displays a project tree and all views available (for example, Monitoring, Media, Agents, and Programming) in your system with the floors, rooms, and devices you will define depending on what you want to do. In the project tree, you can click to collapse or expand the floor, room, or device levels.

The lower left portion of the window shows the view buttons. This is where you can create automated tasks for your system:

- **Monitoring:** Click to view the devices on your system, to access specific device controls, and to configure the properties of specific devices.
- **Media:** Click to manage your digital music, movies, and other collections from a Disc Player, DVD or CD player, etc.
- **Agents:** Click to configure an intelligent *agent*.
- **Programming:** Click to create and modify custom programming for your system.

Composer HE Getting Started

3.2 Views

Control4® Composer HE has four (4) main views (Monitoring, Media, Agents, and Programming). If you click on a view button, the appearance and functionality of the Composer interface changes to reflect the configuration options available for that view.

Tip: You can collapse the views by clicking and pulling down the dotted bar above the view buttons, giving you more room to view the *project tree* above.

Note: The project tree has already been created for you by your Control4 Dealer or Installer. If the project tree doesn't display, check with your Control4 Dealer.

The Composer HE main views are:

- **Monitoring**—View your system, your project tree and the devices in each room.
- **Media**—Add and scan stored or broadcast media.
- **Agents**—Use *agents* in the system and in programming. Agents include: Lighting Scenes, Wakeup, Scheduler, etc.
- **Programming**—Program devices and agents on the system.

3.2.1 Monitoring

The Monitoring view lets you view all of the devices and their current state for your system, rooms and devices.

This view

- displays a list all of the devices in a room.
- displays the current state of contact inputs or other devices.
- lets you monitor and control the devices contained in the selected location of the project tree.

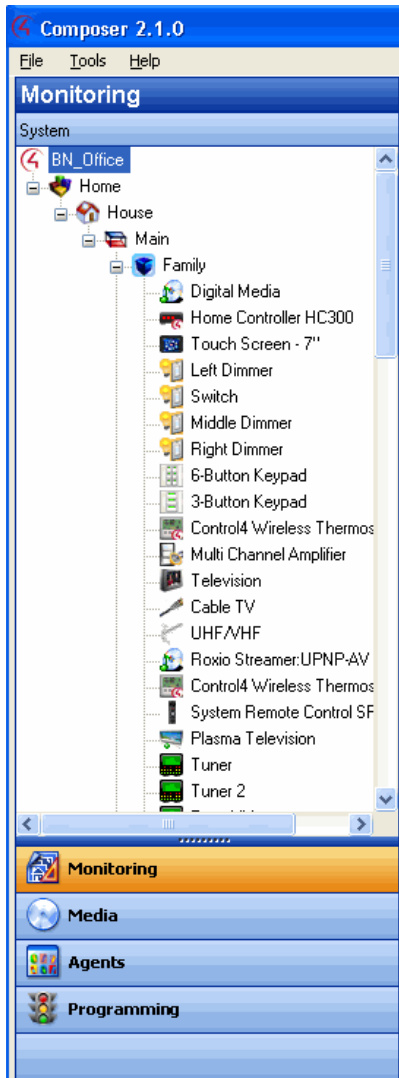
When selecting a site, building, floor, room, you can see all devices associated with each other in that area. If you select a device in the project tree, this view shows all devices that are in the same room also.

3.2.1.1 Project Tree (Left Pane)

The Monitoring view contains the project tree, a hierarchical display of locations and devices. The project tree is where you build your project. Double-click on a device to access its device controls.

Composer HE Getting Started

Monitoring view:

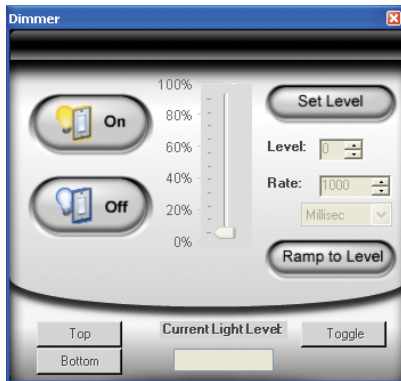


3.2.1.2 Device Control Window

Access a Device Control window for supported devices by selecting and then double-clicking the device in the project tree of the Monitoring view. For example, if you select **Left Dimmer** in the project tree under Living Room, the following Device Control window displays.

Composer HE Getting Started

Device Control window:



The Device Control window

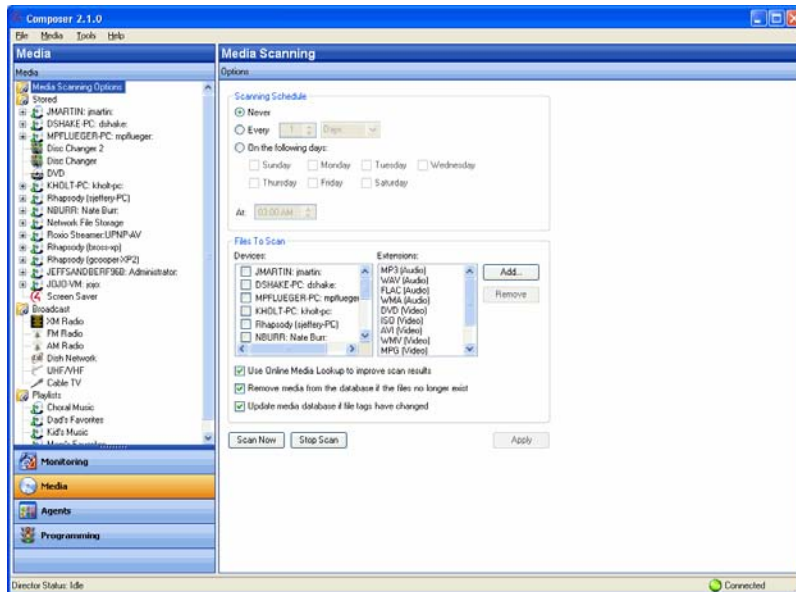
- lets you test and control a device (after *identifying* connections) from Composer.
- provides you with a simple user interface for device control. For example, the device control for a Dimmer lets you click a button on the screen to turn the Dimmer on and off or change the light level.
- lets you change the configuration parameters (temporarily) and control a device from Composer HE. Later, you can set the parameters permanently in the Properties pane or Programming view. For example, you can adjust the ramp rate of a Dimmer to determine the desired ramp rate to set during programming.

3.2.2 Media

The Media view lets:

- you add and scan your media selections to the system, including stored music and movie collections or broadcasts channels and stations. In the Media view, the left-side selections change the right-side views.
- users view and select stored or broadcast media from the Navigators (including On-screen Navigator, System Remote Control or Touch Screens that come in a variety of sizes).
- you set up playlists (playlists can be created at the Navigators). When you create or edit a playlist, you can pick albums or tracks to play.
- you search for cover art (when not loaded automatically) to enhance displays.

Composer HE Getting Started



This list provides the media types for these categories:

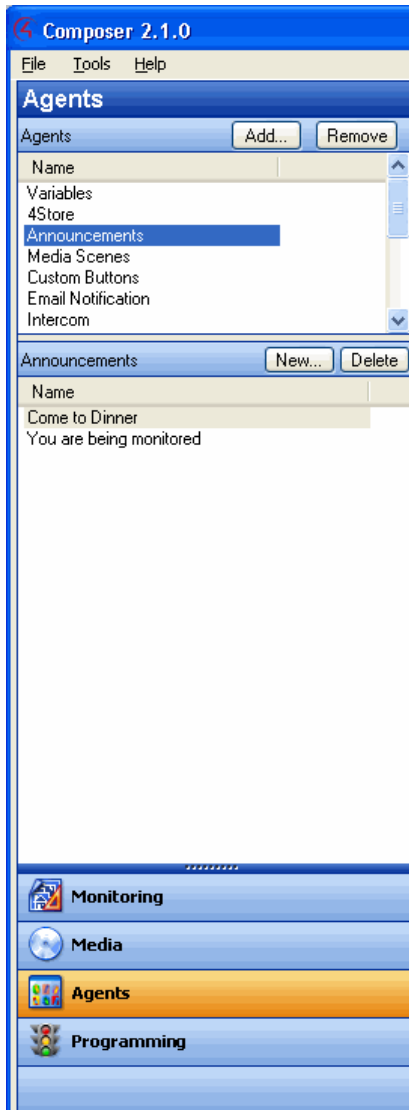
- **Stored Media**
 - **CDs**. Let you store CD cover art, albums, artist ratings, and genres (such as Rock or Country).
 - **DVD Player or Disc Changer**. Lets you store DVD and CD (when DVD supports CD) selections by viewing cover art, titles, info, results, media, and disc list.
 - **USB Driver or USB drive (CBM Flash Disk)**. Lets you store a variety of media and access it from one of these USB-connected devices.
 - **MP3, AAC, or FLAC** on Digital Audio Player. Lets you store MP3—HDD music cover art, albums, artist ratings, and genres (such as Rock or Country).
- **Broadcast Media**
 - **Direct TV**. Lets you view Direct TV channel options, including station IDs, genres, ratings and music channels.
 - **Dish Network**. Lets you view Dish Network channel options, including station IDs, genres, ratings, and music channels.
 - **Cable TV**. Lets you view Cable channel options, including station IDs, genres, ratings, music channels.
 - **UHF/VHF**. Lets you view the UHF channel options, including station IDs, genres, ratings, and HDTV.
 - **AM/FM/XM and Internet Radio**. Lets you scan AM, FM, Internet radio, and XM stations.

Composer HE Getting Started

3.2.3 Agents

Agents let you perform more complex programming by using functional modules. For example, the Scheduler *agent* lets you program an action using dates and times.

Agents view:



Composer HE Getting Started

Available agents:

- 4Store
- Announcements
- Custom Buttons
- Email Notification
- Intercom
- Lighting Scenes
- Macros
- Media Scenes
- Rhapsody
- Scheduler
- Screen Saver
- SNMP Configuration
- Timer
- Variables
- Video Wall
- Wakeup

See “Agents Types” in the *Composer HE User Guide* for a definition of each agent with examples.

This list shows the options available on some agents:

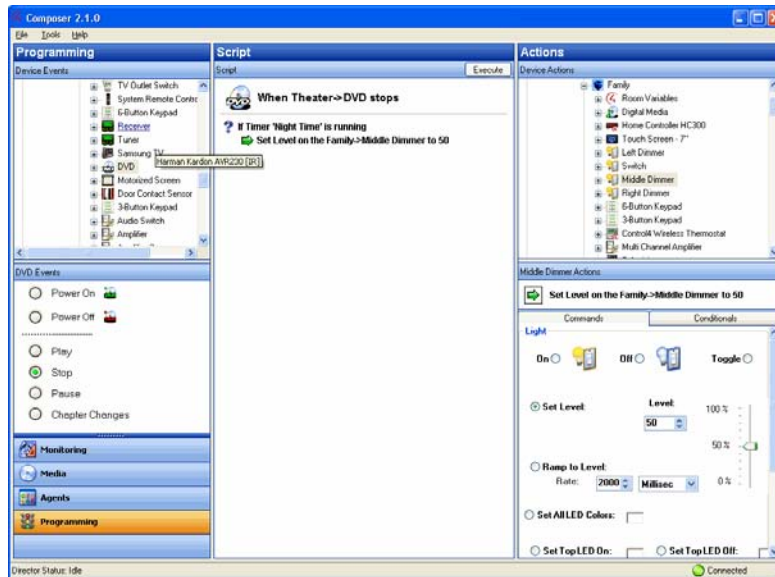
- **Add**—Lets you add agents to your system. **Note:** Your Dealer will need to do this for you.
- **Remove**—Lets you remove agents from your system.
- **New**—Lets you create a new instance to customize the highlighted agent in the Agents pane (left pane). For each specific instance of an agent, you provide a unique name and customize it for the specific need.
- **Copy**—(Lighting Scene only.) Lets you copy an existing instance of the highlighted Lighting Scene agent.
- **Delete**—Lets you remove an existing instance of the highlighted agent.
- **Agent Navigation pane**—Provides each agent a unique interface to set up agent information in a majority of cases for future programming in the Programming view.

3.2.4 Programming

For the Control4 system to control its devices, you need to configure the behavior of those devices to occur automatically in the Control4 system. The Programming view lets you write a programming script using Composer’s drag-and-drop or double-click functions.

Composer HE Getting Started

Programming view:



All programming is based on events and actions in a Control4 system. For example, if a door opens, it is known as an *event*. When an event occurs in the system, it can trigger programmed *actions* to take place. For example, when the bathroom door opens (event), you can program the bathroom light to turn on (action).

The Programming view consists of several panes:

- **Device Events** and **Project Tree** (top left pane)—Displays all devices that have associated events.
- **Events** (bottom left pane below the Events project tree)—Displays the available Events for the currently selected device in the Events project tree. If there are no events for that device, none are displayed.
- **Script** (center pane)—Displays the Script that is associated with the currently-selected event from the Events pane. Drag and drop items to re-arrange the order and nest items in the Script pane.
- **Device Actions** (top right pane)—Displays all available device options (in tree form) that have associated actions you can use to write your script.
- **Actions** (bottom right pane)—Displays the selection of the Command, Conditionals, and Loops tabs you can select to move to the Script pane. To add an action to the script, select the action, and then click or drag-and-drop the **green arrow** or **blue question mark** to add the script to the Script pane.

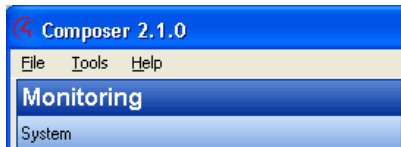
See the *Composer HE User Guide* for details about how to create a script.

3.2.5 Menu Options

Use the Control4® Composer HE menu bar to perform basic file tasks, view the network tools, and view the online help.

Composer HE Getting Started

Menu options:



The Menu bar provides the following menus:

- **File menu**—Perform typical file management tasks, connect to or disconnect from the Local Director, start Interviewer, update both the Composer and Navigator software, and exit Composer.
- **Tools menu**—View network status and logs.
- **Help menu**—View *Composer HE Getting Started* online Help and Composer HE version information. Links to the *Composer HE User Guide* are provided also.

3.2.6 File

The File menu lets you perform project file management tasks, connect to the Director, start Interviewer, and refresh Composer and the *Navigator*s, including the Touch Screen and On-Screen Navigators. The file management options relate to the Composer HE project files you back up on your PC (they have a .c4p extension). Project files always save by default to the 'My Documents' directory. When you set up a Control4 system, you create live project configuration information on the *Controller* that is backed up to a project file on your PC also. This lists specific information about each system, including devices, connections, configuration, programming information, and media.

- **Load Project**—Loads a selected project into the connected Controller. Composer prompts you for a backup before it clears the project configuration information, and replaces it with the selected project to which you can browse and load.
- **Connect to Director**—Connects you to a Director residing on the Controller. When you connect, project configuration information from the Controller appears on the Composer screen.
- **Disconnect from Director**—Disconnects you from a Director. Composer prompts you to back up your project before disconnecting you from the currently-connected Director. This option is available when connected to a Director.
- **Backup**—Backs up the current project to your connected PC. The first time you back up, the software prompts you for a file name and to back up any media information (recommended). When you choose this option, the current project becomes an option in the File > Load Project list.
- **Backup As**—Backs up the current project, and prompts you to enter the name of the file. Composer prompts you to back up any media information (recommended). When you choose this option, the current project becomes an option in the File > Load Project list.
- **Refresh**—Refreshes the Composer screen with the current project configuration information from Director.
- **Refresh Navigators**—Refreshes the Navigator screens with the current project configuration information from Director. **Note:** MyHome for PCs and tablets must be updated in that app. MyHome for iPhone, iPod touch, iPads, and Androids will update if online.
- **Exit**—Exits Composer HE, and prompts you to back up the project before the software exits and returns you to the desktop.

Composer HE Getting Started

3.2.7 Media

Note: The Media menu appears only when you select the Media view.

The following options are available:

- **Clear Media List**—Clears the media list associated with the highlighted device from the Media Database.
- **Export Media List**—Exports a media list for the selected device from your Controller to your PC.
- **Import Media List**—Imports a media list from your PC to your Controller.
- **Export Playlists**—Exports a playlist from your Controller to your PC.
- **Import Playlists**—Imports a playlist from your PC to your Controller.
- **Import DVD List from File**—Imports an Excel list of DVDs for Disc Changers.
- **New Playlist**—Creates a playlist of MP3, *AAC*, or *FLAC* files. The playlist is available from any Touch Screen or On-Screen Navigator. Add albums, remove songs, re-order songs, etc. **Note:** If you remove songs from a playlist, it does not remove them from the Media Database.
- **Delete Playlist**—Removes a playlist.
- **Rename Playlist**—Renames a playlist.
- **Tag media files**—Used for OS 2.0 and later conversion of media files so all media players can see the same tags.

3.2.8 Tools

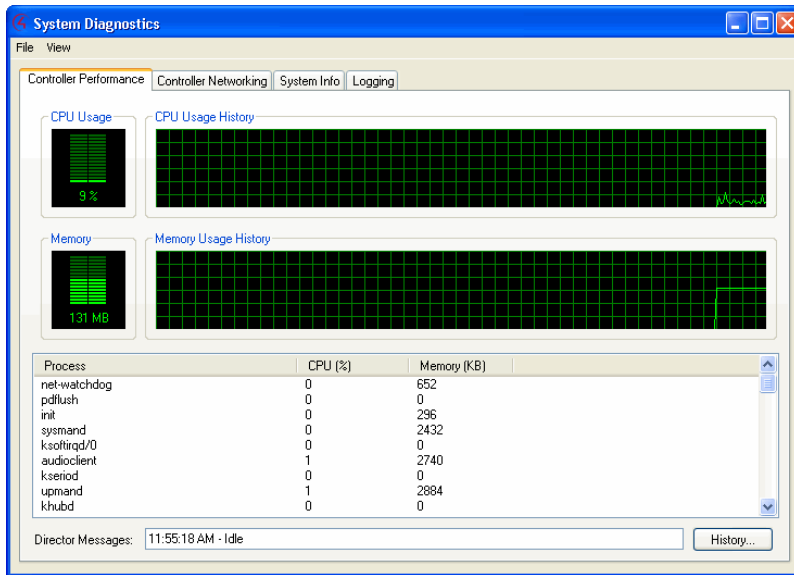
The Tools menu lets you access some tools for checking device connection status:

- **System Diagnostics**—Assists you in gathering system information to help you determine if any issues encountered are configuration problems, performance issues, or potential defects. The System Diagnostic tool is also valuable for logging information and sending an e-mail message to Control4 Technical Support. See "System Diagnostics" below.
- **Account Services**—Facilitates system registration, which is required for software updates and to use the media services in the system. Account Services is also required in conjunction with a *4Sight* account to enable the *remote access* web service (which allows secure access to your system via the Internet). See "Account Services" below.
- **Update Manager**—Lets you update Director. Check with your Control4 Dealer or Installer for details.

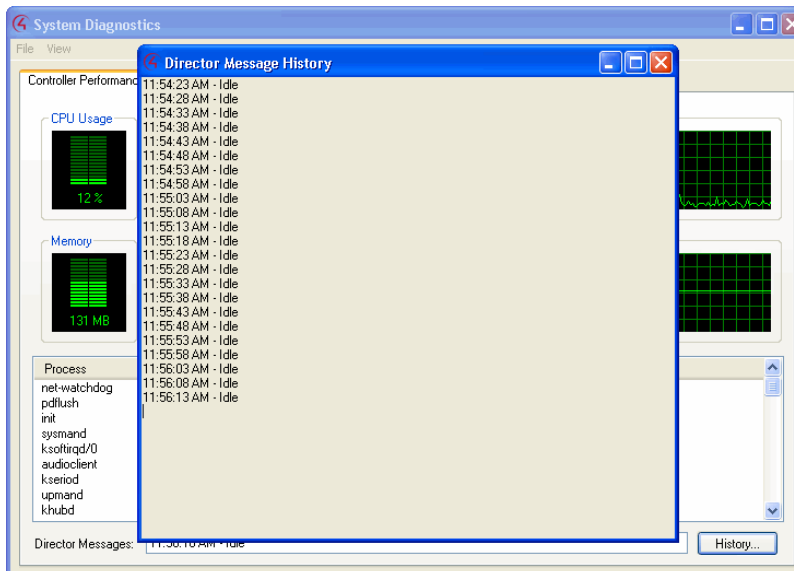
3.2.8.1 System Diagnostics

Controller Performance Tab—View Controller performance information including CPU and memory usage.

Composer HE Getting Started

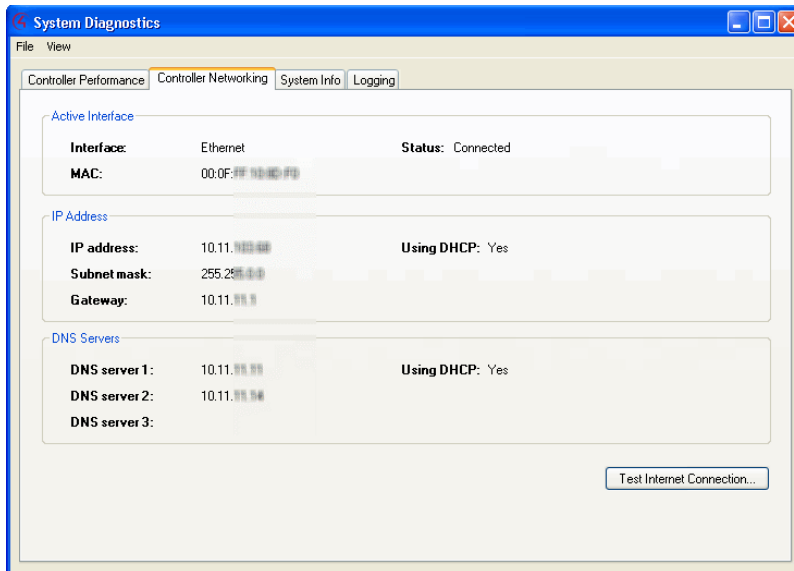


Controller Performance History Button—View the history of CPU and memory performance. Click the **History** button on the lower right of the screen.

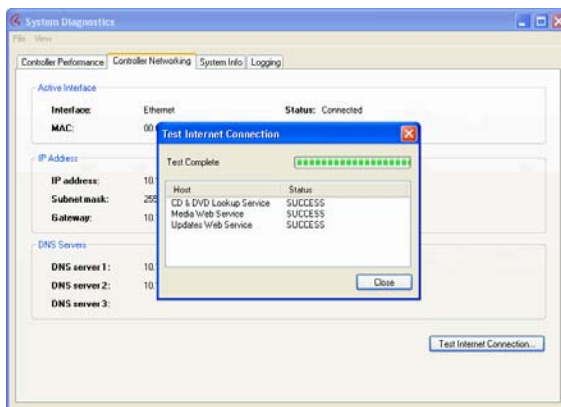


Composer HE Getting Started

Controller Networking Tab—View Controller networking information, including network type, connection status, MAC address, IP address, Subnet mask, Gateway, DHCP status, and DNS server information.

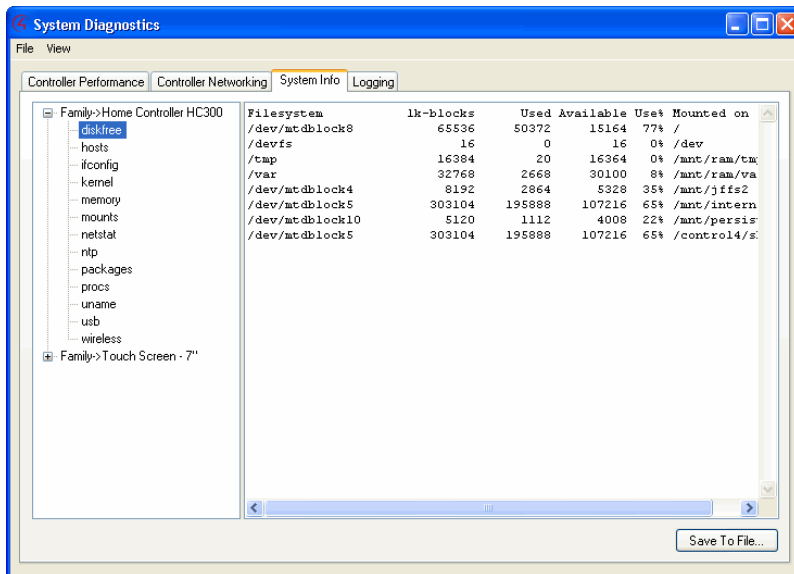


Test Internet Connection Button—Click to test the current Internet connection.

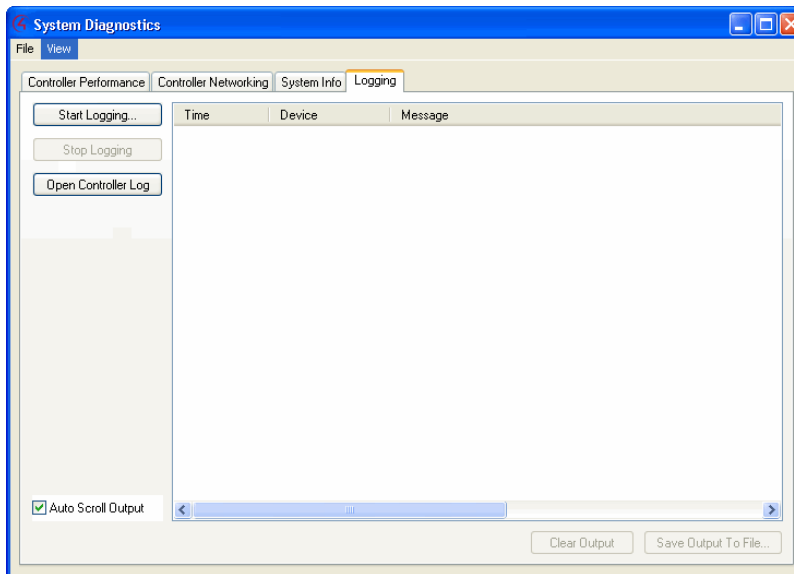


Composer HE Getting Started

System Info Tab—View System information. Click **Save To File** to save the displayed text to a file.



Logging Tab—Reproduce (if possible) and log system problems.



Start Logging—Logs the system information.

Stop Logging—Stops logging the system information.

Open Controller Log—Opens the log file, if system information was logged.

Auto Scroll Output—Check to allow the output to scroll through automatically.

Composer HE Getting Started

3.2.8.2 Account Services

Set up a my.control4.com account and register a Controller. Check the current status and establish a service connection.

- Controller Registration
- Current Status
- Service Connection

3.2.9 Help

Use the help menu to access the online version of this *Composer HE Getting Started* with Index, Glossary, and search options. Also, you can check the version of your Composer software and Director.

From the Help menu, you have the following options:

- **Contents.** Displays the Content tab of the Help system.
- **Index.** Displays the Index tab of the Help system.
- **About Composer.** Displays the Composer and Director version information.

4. Where to Go from Here

Refer to the *Composer HE User Guide* on the Control4® website (available as Web Help or PDF). The user guide provides sections about how to monitor and program your Control4 system. If you are using online Help in Composer HE, links to the *Composer HE User Guide* are provided.

Control4 supports Control4 Dealers as they support you. If you have questions or need assistance beyond what is provided in this *Composer HE Getting Started* or the *Composer HE User Guide*, please contact your Control4 Dealer.

Note: Depending on the service agreement established with your Dealer, your Dealer may charge you for support and assistance.

5. Glossary

4Sight: An Internet service that provides a connection to the Home-Automation System any time and from any place worldwide.

4Store: The Control4 App Store where you can buy applications for your system. The applications appear in the Touch Screens or On-Screen Navigators under More > Settings.

AAC: Advanced Audio Coding. A successor to the MP3 format. A standard, lossy compression and encoding scheme for digital audio. Touts better sound quality.

action: An activity that occurs when an event prompts it to do so.

agent: In Control4 programming, agents provide the ability to perform complex programming by using functional modules. There are various types of agents; for example, Announcements, Email Notifications, Scheduler, Lighting Scenes, Wakeup, etc.

AV: Audio Video

CD: (Compact Disc) - An optical disc that stores digital data. This format is compatible with Control4 products.

client: A software or hardware device that communicates to a server for feedback from the server via an application for the user.

Command: A 'do' statement; actions the Director communicates to a device.

Composer: The Control4 software used to design and define a Control4 Home-Automation System.

Composer Pro: Composer is used to set up and configure Control4 devices to communicate with each other in a Home-Automation System.

conditional: An 'if' statement that asks a true/false questions which are acted upon in Composer programming.

connection: Binding or linking devices together in Composer so they can communicate with each other.

contact: Contacts are generally used to monitor the status of something (door, window, water sensor, etc.) and can be hooked up through a security panel or directly using a Control4 Controller or Contact/Relay Extender. Contacts connected to a Control4 Controller or Contact/Relay Extender can be configured either as NC (normally closed) or NO (normally open).

Control4 system: A Home-Automation System designed and developed by Control4.

Controller: The main device that makes Home Automation possible. There may be multiple Controllers within a Control4 system. The Controller that runs Director is referred to as the Primary Controller.

device: A component that requires a device driver; code that is used to allow the Control4 system to work with that device.

device driver: Every device in the Control4 system needs a corresponding device driver to control the device.

DHCP: DHCP (Dynamic Host Configuration Protocol) - A protocol used between a network client and a DHCP server (usually a router or access point) that dynamically assigns IP addresses from a pre-defined list to clients on a network.

Director: Each Control4 Controller (such as an HC-800 Controller) ships with pre-installed Director software (Linux based) embedded in the device. The Director communicates with Control4 products and third-party products to enable Home Automation and interaction of individual devices. Director runs the Control4 devices. Composer Pro is the software used to connect to and program a system Director that resides on a Controller.

Composer HE Getting Started

DriverWorks: The DriverWorks SDK is used to create two-way drivers for audio video (AV) and non-AV devices.

DVD: (Digital Versatile Disc) – A media format for video and data storage.

end point: The end point is the final point (device) on the defined path over which audio and/or video content is routed to a room. An example of this would be a TV or Receiver.

Ethernet: Uses Ethernet category 5 (CAT5 or CAT5e) wiring to transfer data. Ethernet uses a star network topology that allows multiple points to communicate to a single point. The Speaker Point® and Mini Touch Screens use Ethernet to communicate to the Control4 Controller.

event: An action; used to trigger Composer programming when programming Control4 devices.

file format: A format used by applications to store/read files.

FLAC: Supported by Control4 for software release 1.8, this is a free, open source, lossless audio codec format that supports tagging, cover art and fast seeking. Audio is compressed with no loss in quality.

gateway: (router)- Provides a means of communicating between two separate networks.

home network: A network installed in the customer's home that provides an Ethernet or wireless connection so that Control4 devices can communicate with each other.

Home-Automation System: The Control4 system: a line of Home Automation products that communicate with each other over Ethernet, WiFi, or ZigBee for a total Home Automation experience.

identify: Your Control4 Dealer or Installer will identify a device to the Control4 system after they add it to the project tree. This ensures that the device can communicate with the Control4 Controller and Director.

Intercom: A two-way audio and/or video communication among supported Control4 devices.

Interviewer Wizard: An automated setup program in Composer that builds a project for Home Automation.

IR: A device controlled using a wireless remote control device. Commands are sent via pulses of infrared light to the device.

LCD: (Lighted Crystal Display) - A display used with some Control4 interfaces.

LCD Navigator: An LCD device used to control lighting, music, videos, etc., on an LCD screen.

LED: lighted electronic display

Linux: An operating system used by several Control4 devices.

List Navigator: A System Remote Control device uses a Navigator that lists the options.

Live Connection: A term used in Composer Pro to indicate an actual connection to the network.

Loop: A type of conditional in programming; a 'while' statement; for example, "while the sprinklers are on..."

Media Database: Media information is stored in the Media Database, which will permit users to view the media from the Navigators.

MP3: A music format that makes streaming audio available.

Navigator: A Control4 Navigator used with the Control4 system to control lights, music, videos, etc. Navigator is software that the customer interacts with using a Universal Remote Control, On-Screen Navigator, Touch Screen, or LCD Screen.

On-Screen Device: Allows you to select the Controller (e.g., HC-800 Controller) in the room that controls the source for the on-screen display.

playlist: A list of songs compiled in a list. The list can be compiled by songwriter, album, song type, or any combination.

Power Over Ethernet (POE): A Control4 device that is Ethernet controlled.

Composer HE Getting Started

Primary Controller: The main device that makes Home Automation possible. There may be multiple Controllers within a Control4 system. The Controller that runs Director is referred to as the Primary Controller.

programming: A machine-readable artificial language used to express computations that can be performed by a device.

project tree: A tree view in Composer where the project is layered by the larger branches (Home, Office, etc.) and then the lower branches (floor, rooms, etc.), and finally to the leaf level (drivers).

ramp rate: The rate that a Dimmer ramps up its voltage.

relay: An electrical switch that opens and closes. A relay is controlled by another electrical circuit.

remote access: The ability to access a device from a remote location.

Remote Director: Connects you to the home network while working in Composer from a remote location.

retrofit: The ability to set up a Home-Automation System in an existing structure or home. Compare this with new building construction.

RJ-45 jack: An eight-pin jack used to connect CAT5e network cables to devices through Ethernet signals.

router: See gateway. Functions similar to an AP but with additional functionality for controlling the network; for example, coordinating traffic between different networks.

serial-controlled device: Serial-controlled devices with an RS-232 interface and control protocol often have a higher level of controllability than IR-controlled devices. Examples of serial-controlled devices are projectors, multi-disc DVD changers, etc.

switch: An extension of a router that adds more Ethernet ports to support additional devices or clients on the local network.

system event: An action that causes another action; for example, if a projector turns on, it enables the other devices in the system that work with the projector.

system remote: System Remote Control

System Remote Control: A Control4 System Remote Control is a universal solution that replaces System Remote Control devices from other manufacturers, and includes programmable buttons. This System Remote Control can access on-screen (Graphical) Navigators.

Touch Screen: A Touch Screen is a Home-Automation System Navigator that controls the home's lighting, music, videos, and other devices on the Home-Automation System.

UI (user interface): The preferred term is Navigator. The Control4 interface used with Control4 devices to control Home Automation, such as Touch Screens or On-Screen Navigators.

universal remote: Universal remote control. A third-party remote control that can be programmed to replace other remotes in the home so that only one remote is needed, replacing all others. Control4 System Remote Control devices are a type of universal remote control.

USB: Universal Serial Bus) - A format used with USB sticks that plug in to a USB port on Control4 devices.

Virtual Connection: A term used in Composer Pro to indicate a connection outside the network.

Virtual Director: A connection to a virtual Controller only (a PC is the Director host rather than the Controller). Projects created or edited here are benign until the saved project is loaded onto a Controller.

WiFi: Uses bi-directional wireless technology to transfer data. WiFi (wireless fidelity) devices "connect" to each other by transmitting and receiving signals on a specific frequency of the radio band using a wireless access point. This technology uses the star network topology. WiFi uses high bandwidth 802.11.

Composer HE Getting Started

wired network: Uses Ethernet Category 5 (CAT5) wiring to send and receive data between devices connected to a network.

wireless access point: A router extension with an antenna that communicates with WiFi devices and clients in the home. A wireless hub that connects to the wired network, and distributes the wireless signal.

Wireless Switch: Uses the ZigBee. UL listed dimmer. Single or multi-gang. Has an air gap to cut power.

WLAN: Wireless local area network.

ZigBee: A wireless network that uses bi-directional wireless mesh network technology to transfer messages from one device to another. Unlike a star network topology where devices can only send messages to each other by sending them first to a single central device (which then delivers the message to the recipient device), a mesh network topology allows the devices to forward messages from one device to another, thereby extending the effective range of the network. Uses low bandwidth 802.15.4. 250 devices are allowed per controller but Control4 recommends 125.

ZigBee Pro: The 1.1 version of ZigBee that provides improvements in standardization by: allowing more interoperability with other Control4 devices, support for home automation profiles, and improves the scalability of multiple ZigBee access points.

6. Index

- 10-digit registration code, 23
- 4Sight, 10, 12, 22, 24
- 4Sight subscription
 - set up, 31
- 4Store, 8
- AAC, 8
- Account Administration, 32
- Account Services, 43, 47
- Activate an account, 20
- Activate software, 22
- Add storage device, 15
- Agents
 - 4Store, 16
 - Announcements, 16
 - Custom Buttons, 16
 - E-mail Notification, 16
 - Intercom, 16
 - Lighting Scenes, 16
 - Macros, 16
 - Media Scenes, 16
 - Rhapsody, 16
 - Scheduler, 16
 - Screen Saver, 16
 - Timer, 16
 - Variables, 17
 - Video Wall, 17
 - Wakeup, 17
- Agents view, 34, 39
- Agents View, 16
- AMG and Gracenote lookup service, 9
- Announcement agent, 10
- Auto Scroll Output, 47
- Backup, 42
- Backup As, 42
- Backup copy, 12
- Backup with Media, 13
- Broadcast Media, 38
- Clear Media List, 43
- Composer
 - exit, 32
- Composer HE changes, 12
- Composer HE interface, 20, 33
- Composer HE views, 13
- Configure devices, 10
- Connect to a Director, 20
- Connect to Control4 system, 25
- Connect to Director, 26, 42
- Contact Information, 2
- Control4 Dealer, 12
- Controller, 20
- Controller Networking Tab, 45
- Controller Performance History Button, 44
- Controller Performance Tab, 43
- Copy MP3 files, 15
- Copyright, 2
- Create New Account, 23
- Customize, 10
- Customize system, 13
- Delete Playlist, 43
- Device Actions pane, 17
- Device Control Window, 36
- Device Events pane, 17
- Digital music, 10
- Director, 12
 - connect locally, 27
- Director on Local Network, 27
- Disclaimer, 2
- Disconnect from Director, 42
- DVD information, 15
- E-mail Notification agent, 10
- Exit, 42
- Exit Composer, 13
- Export media and playlists, 13
- Export Media List, 15, 43
- Export Playlists, 15, 43
- File menu, 26, 42
- FLAC, 15
- FLAC music format, 8
- Flash, 8
- Get started, 19
- Glossary, 48

Composer HE Getting Started

- GNU, 2
- Gracenote, 2
- Grant Dealer rights, 29
- Hardware not supported, 7, 8, 9
- Help menu, 42
- Import DVD List from File, 43
- Import Media List, 43
- Import Playlists, 43
- Inoperable system, 13
- Install Composer HE, 20
- Launch Composer HE, 24
- Legal Notice, 2
- Lighting Scenes, 8
- List View, 15
- List View screen, 15
- Load a project file, 13
- Load Project, 42
- Local connection, 26
- Logging Tab, 46
- Macros, 8
- Macros agent, 10
- Media Database, 13
- Media Manager, 9
- Media menu, 8
- Media Scenes, 10
- Media view, 15, 34, 37
- Menu Options, 41
- Monitor, 10
- Monitoring view, 15, 34, 35
- MP3, 9
- MP3 files, add new, 15
- MPEG, 2
- My Documents
 - Backup file, 26
- Navigator, 8
- Network device, 15
- Network file store, 15
- New Playlist, 43
- Open Controller Log, 46
- OS 2.0 changes, 8
- OS 2.0.1 changes, 7
- OS 2.0.5 changes, 7
- Playlist, 15
- Playlists, 13
- Programming, 13
- Programming example, 18
- Programming view, 34, 40
 - Actions, 17
 - Boolean, 18
 - Commands, 17
 - Conditionals, 17
 - Devices, 17
 - Events, 17
 - Numeric, 18
 - Programming Control, 18
 - Room Variables, 18
 - Script, 17
 - String, 18
 - Variables, 17
- Programming View, 17
- Project Tree, 35
- Properties, 15
- Properties page, 15
- Refresh, 42
- Refresh Navigators, 42
- Register Controller, 22, 23, 30
- Remote Access, 24
- Remote connection, 26
- Remote Director connection, 30
- Rename Playlist, 43
- Requirements, hardware and software, 21
- Restore the system, 12
- Restrictions, 12
- Scan, 16
- Scan for new music, 15
- Scan media, 37
- Scheduler agent, 10
- Search, 15
- Search for Cover Art, 37
- Select Remote Account, 30
- Set up playlists, 37
- Software not supported, 7, 8, 9
- Sony Disc Changer, 15
- Start Composer HE, 20, 24
- Start Logging, 46
- Stop Logging, 46

Copyright © 2012 Control4. All Rights Reserved.

Composer HE Getting Started

Stored Media, 38
Subscription code, 24
System configuration, 13
System Diagnostics, 43
System Info Tab, 46
Tag media files, 43
Test Internet Connection Button, 45
Tools menu, 42
Undo a change, 12
Update Manager, 43
USB-attached storage device, 15
Wakeup scene, 10
What's New, 5
ZigBee Pro, 10