

Composer ME User Guide



Composer ME User Guide

Control4 Disclaimer

Control4® makes no representations or warranties with respect to this publication, and specifically disclaims any express or implied warranties of merchantability or fitness for any particular purpose. Control4 reserves the right to make changes to any and all parts of this publication at any time, without any obligation to notify any person or entity of such changes.

Trademarks

Control4 and the Control4 logo are registered trademarks of Control4 Corporation. Other product and company names mentioned in this document may be the trademarks or registered trademarks of their respective owners.

Legal Notice

GNU

GNU GENERAL PUBLIC LICENSE TERMS AND CONDITIONS FOR COPYING, DISTRIBUTION AND MODIFICATION
(Section 3.b.)

You may copy and distribute the Program (or a work based on it, under Section 2) in object code or executable form under the terms of Sections 1 and 2 above provided that you also do one of the following:

Accompany it with a written offer, valid for at least three years, to give any third party, for a charge no more than your cost of physically performing source distribution, a complete machine-readable copy of the corresponding source code, to be distributed under the terms of Sections 1 and 2 on a medium customarily used for software interchange.

The complete text for this license is available on the Control4 web site at: <http://www.control4.com>.

Gracenote

Gracenote®, Gracenote logo and logotype, and the "Powered by Gracenote" logo are either a registered trademark or a trademark of Gracenote, Inc. in the United States and/or other countries.

Music and DVD recognition technology and related data are provided by Gracenote®.

Gracenote is the industry standard in Music and DVD recognition technology and related content delivery. For more information visit www.gracenote.com.

MPEG

Fraunhofer IIS and Thomson. MPEG Layer-3 audio coding technology licensed from Fraunhofer IIS and Thomson. Supply of this product does not convey a license nor imply any right to distribute content created with this product in revenue-generating broadcast systems (terrestrial, satellite, cable, and /or other distribution channels), streaming applications (via Internet, intranets, and/or other networks), other content distribution systems (pay-audio or audio-on-demand applications, and the like) or on physical media (compact discs, digital versatile discs, semiconductor chips, hard drives, memory cards, and the like). An independent license for such use is required. For details, visit <http://mp3licensing.com>. Radio Locator is the service provider of AM/FM channel list.

© 2005-2008 All Media Guide, LLC provides music and video recognition technology that provides cover art and related text that enriches the Control4 user Navigators.

Copyright

© 2012 Control4. All rights reserved. Control4, the Control4 logo, the Control4 iQ logo and the Control4 certified logo are registered trademarks or trademarks of Control4 Corporation in the United States and/or other countries. All other brands or names may be claimed as property by their respective owners. Pricing and specifications subject to change without notice.

No part of this publication may be reproduced, photocopied, stored on a retrieval system, or transmitted without the express written consent of the publisher.

Contact Information

Control4 Corporation

11734 S. Election Road

Salt Lake City, UT 84020 USA

<http://www.control4.com>

Part Number 200-00171

Composer Media Edition User Guide (OS 2.2)

Copyright © 2012 Control4. All Rights Reserved.

Contents

1.	Introduction	5
1.1	Purpose.....	5
1.2	Related Documents and Resources	5
1.3	What's New in This Release?.....	6
1.3.1	OS 2.2.....	6
1.3.2	OS 2.1.....	6
1.3.3	OS 2.0.5.....	7
1.3.4	OS 2.0.....	7
2.	Getting Started.....	8
2.1	Requirements.....	9
2.2	Installing Composer ME	9
2.3	Starting Composer ME	10
2.4	Refreshing the Navigators	11
2.5	Closing Composer ME.....	12
3.	Introducing Composer ME.....	12
3.1	Directors Dialog.....	13
3.2	Media View.....	14
3.2.1	Stored Media	15
3.2.2	Broadcast Media.....	15
3.3	Menu Options.....	15
3.3.1	File	16
3.3.2	Media	17
3.3.3	Help.....	17
4.	Setting Up Media and Playlists.....	18
4.1	Setting Up Media on a CD or Disc Changer	19
4.2	Setting Up Videos for a Media Player	23
4.3	Auto-Scan Media in Composer ME.....	24
4.4	Testing the Media Connection	25
4.5	Setting Up Media for Television Stations	25
4.6	Setting Up Media for Radio Stations.....	27
4.7	Setting Up Internet Radio	28
4.8	Using External Storage Devices	30

Composer ME User Guide

4.9	Setting Up Playlists	31
4.10	Editing Media Information.....	32
5.	Other Composer ME Tasks.....	33
5.1	Clearing a Media List.....	33
5.2	Exporting a Media List.....	33
5.3	Importing a Media List	34
5.4	Updating Composer ME	34
6.	Glossary.....	35
7.	Index.....	39

Composer ME User Guide

1. Introduction

Use the Control4® Composer Media Edition (Composer ME) application to set up your media and playlists and perform other tasks related to your music, movies, and videos.

1.1 Purpose

The purpose of this document is to give you instructions, examples, and tips about how to add and manage the media for your Control4 system. This document applies to the Control4 Operating System (OS) 2.1 (OS 2.1) and later.

Words that appear in red are either in the Glossary or provide tips, examples, and other important information.

1.2 Related Documents and Resources

Document file name	Title and location
Control4 System Quick Start Guide (200-00153)	PDF: http://www.control4.com/residential/products/resources/#documentation/
Control4 System User Guide (200-00001)	PDF: http://www.control4.com/residential/products/resources/#documentation/ Help: http://www.control4.com/residential/products/resources/
Control4 Composer Home Edition Getting Started (200-00169)	Help: Composer HE application PDF: http://www.control4.com/residential/products/resources/#documentation/
Control4 Composer Home Edition User Guide (200-00170)	Help: http://www.control4.com/documentation/Composer_HE_User_Guide/ PDF: http://www.control4.com/residential/products/resources/#documentation/
Control4 System Remote Control SR-250 User Guide (200-00152)	PDF only: http://www.control4.com/residential/products/resources/#documentation/
Control4 MyHome Setup Guide for Homeowners (DOC-00004)	PDF: http://www.control4.com/residential/products/resources/

1.3 What's New in This Release?

The Control4® Composer Media Edition (Composer ME) software and hardware updates for OS 2.2 are detailed below.

1.3.1 OS 2.2

- A new 7" Portable Touch Screen has been added to the product line with audio and video Intercom capabilities. See the *Control4 System User Guide* for details about Intercom.
- Minor changes were also made to the Disc Changer and CD sections.
- Added support for MyHome – Android. See the *Control4 System User Guide* for details.
- This document contains minor edits only.

1.3.2 OS 2.1

1.3.2.1 New Hardware and Media Support

- Added the Apps container to the default Control4 home page; 4Store is now in the Apps container. This means that there are currently seven (7) containers on the fully-populated default Control4 Home page (Watch, Listen, Lights, Security, Comfort, Apps, and More).
- When there is only a single Thermostat in the project, selecting Comfort from the Home page automatically loads the Thermostat control UI.
- Added the ability to turn off the Ambient Light Sensor on the SR-250 (V2) from the remote's LCD menu.
- Added a new 4Store agent.
- Added the ability to create custom buttons for the Navigator screens.
- Photo Screen Saver agent can now serve a single image on all connected graphical Navigators.
- MyHome apps now supported for mobile and PC/Tablet devices. See *Control4 MyHome Setup Guide* or *Control4 System Quick Start Guide* for details.
- Support for Internet radio.

1.3.2.2 New or Updated Sections

- Added the ability to change visibility and display the order of Thermostats (System Design > Properties > Navigator).
- You can now hide the Thermostat as other Navigator devices through Composer menu settings.
- Replaced most screens with new Control4 logos.
- Added a new "Setting Up Internet Radio" section.

1.3.2.3 Hardware and Software No Longer Supported or Partially Supported

- No update is provided for legacy Navigators (Mini Touch Screen, 10.5" Wireless Touch Screen V1, 10.5" In-Wall Touch Screen). These devices will continue to work in compatibility mode.
- Mobile Navigator has been replaced by MyHome apps.
- After OS 2.0.6, no update will be provided for the PoE LCD Keypad.

Composer ME User Guide

- The Wireless LCD Keypad and WiFi Mini Touch Screen are no longer supported.
- The Sony Component Video Switcher is no longer supported.

1.3.3 OS 2.0.5

Highlights:

- Support for HC-200B as a Primary Controller (functionality included in software update)
- New logos

1.3.4 OS 2.0

Highlights:

- New Navigator interface
- Improved media management and performance
- *ZigBee Pro* implementation for the broader market
- New or updated documentation for homeowners

1.3.4.1 New Media and Hardware Support

- A new Flash interface has replaced the interface in Release 1.8.x and earlier. This interface appears on all of the graphical Navigators (Touch Screens and On-Screen Navigators) that OS 2.0 supports. The *Control4 System Quick Start Guide* and *Control4 System User Guide* for OS 2.0 explain how to use this new interface.
- A new Control4 4Store™ has been added for the Navigators. Customers can purchase applications from the Web for the Touch Screens and On-Screen Navigators in their Control4 system.
- Media menu. New option 'Tag media files.'
- A new IO Extender has been added to the Control4 product line.
- A new Home Controller HC-1000 V3 has been added to the product line.
- Support for AAC and WMA music formats.
- New robust media online lookup service (Gracenote®) that replaces AMG.

1.3.4.2 New or Updated Sections

- The Composer and Composer-related documents have been updated and restructured for Control4 OS 2.0 to make it easier for you to get the information you need more quickly. Most topics in this document are available in the online Help (application), WebHelp, or PDF on the Control4 web site.
- All sections in this document have been restructured, reordered, and enhanced.
 - New links, bread crumbs and Glossary pop-ups have been added to the topics in the online help.
 - Text has been pared down for ease of use and readability.

1.3.4.3 Hardware and Software No Longer Supported or Partially Supported

- Home Theater Controller (functions as a Secondary Controller, but not as a Primary Controller; On-Screen Navigator continues to use the legacy interface – prior to OS 2.0).
- Media Controller (functions as a Secondary Controller, but not as a Primary Controller; On-Screen Navigator continues to use the legacy interface – prior to OS 2.0).

Copyright © 2012 Control4. All Rights Reserved.

Composer ME User Guide

- Home Controller HC-1000 V1 (no longer sold by Control4 but fully supported with OS 2.0).
- Home Controller HC-500 (no longer sold by Control4 but fully supported with OS 2.0).
- 10" Wall Mount Touch Screen (will be updated to OS 2.0 but continues to use the Navigators – prior to OS 2.0. This is the last planned update for this device; future support will be limited to compatibility mode).
- 10.5" Wireless Touch Screen V1 (will be updated to OS 2.0 but continues to use the Navigators – prior to OS 2.0. This is the last planned update for this device; future support will be limited to compatibility mode).
- Mini Touch Screen V1 and V2 (will be updated to OS 2.0 but continues to use the Navigators – prior to OS 2.0. This is the last planned update for this device; future support will be limited to compatibility mode).
- System Remote Control V1 and V2 (will need to be replaced if used with OS 2.0).
- Contact Relay Extender (does not support ZigBee Pro). Use an IP connection for OS 2.0.
- Audio products (do not support ZigBee Pro). Use an IP connection for OS 2.0.
- Easy Setup.
- Easy Importer.
- The AMG lookup service has been changed to Gracenote®. The Sony 777 Disc Changer uses Gracenote, but the Media Controller can no longer access album, title, or artist information from AMG. CDs, however, can be imported and will show up in the Media database with a date and time stamp.
- USB Restore or USB Install. Because an Internet connection is required, these USB utilities are not supported in OS 2.0. Use the 1.7.x or 1.8.2 versions of these utilities. After a restore, you can update to OS 2.0 from 1.7.4 and 1.8.2 to OS 2.0.
- Other Media Managers: You can use other media managers, for example, iTunes, Windows Media player, and Media Monkey to create MP3s. You can still use Composer ME and Composer HE to add files to Control4.
- Web Navigator. Rhapsody and 4Store cannot be accessed from the Web Navigator. Use the Touch Screens or On-Screen Navigators.

1.3.4.4 Hardware that Doesn't Support ZigBee Pro

- Control4 System Remote Control, V1 and V2. Use a newer version that supports OS 2.0.
- Audio products: Amps, Switches, Tuners, Speaker Point, etc. Use an IP connection for OS 2.0.
- Contact Relay Extender. Use an IP connection for OS 2.0.

2. Getting Started

Control4® Composer Media Edition (Composer ME) is the software you use to add, scan media, edit media information, and create playlists in the Control4 system for use with the Control4 Navigators. Using a Windows XP-based PC, this program uses a drag-and-drop interface and runs on the Control4 Operating System (OS) Release 2.0 (OS 2.0) and later.

The brains of the Control4 system are the Control4 Controller (for example, Home Controller HC-300). The **Controller** communicates with Control4 and third-party products to enable home automation and interaction of Control4-controlled devices.

Composer ME User Guide

Note: The term 'Controller' referenced in this document refers to any Control4 product that contains the Director component, such as Home Controller HC-1000 V3. Director is the software that controls the system.

2.1 Requirements

Control4® Composer ME requires that your system is functioning correctly before attempting to use this software (OS 2.1 and later). Talk to your Control4 Dealer if this product does not function as documented; this may indicate that the Control4 system may not be set up properly.

Software and network requirements for using Composer ME:

- Control4 Controller (such as Home Controller HC-1000 V3, which has a 500 GB storage capacity). **Note:** The Media Controller and Home Theater Controller are not supported in OS 2.0 and later as the Primary Controllers (Secondary Controllers only).
- PC to run the Composer ME software and control the devices.
- Composer ME (launches Microsoft .NET 1.1 web install).
- Microsoft Windows XP and Service Pack 3 (Home or Professional), Windows Vista, or Windows 7.
- 500 Mhz processor or higher.
- 256 MB RAM.
- 80 MB hard disk space.
- Video card and monitor supporting resolution of 1024 x 768 or higher.
- Keyboard.
- Mouse.
- TCP/IP-based home network (DSL/cable modem, Control4 secure gateway, router, or switch) to connect the PC to the Controller.
- Internet Connection (broadband required for retrieving cover art and media information).
- Registration at my.control4.com is required. See your Control4 Dealer or the *Control4 System Quick Start Guide* for details.

2.2 Installing Composer ME

Follow the steps below to install the Control4® Composer ME software.

Prerequisites

Ensure that you understand the software and network requirements to use this product. Your Control4 Dealer or Installer can assist you if needed.

To install Composer ME:

1. Start the Composer ME installation and follow the on-screen instructions. You might be asked for a registration key. If so, check with your Control4 Installer or Dealer for details.
2. If prompted to update, follow the on-screen instructions to update to the latest version of Composer ME.

Composer ME User Guide

The Composer ME software and *device drivers* may have been updated when the CD or web download was created. Control4 recommends, however, that you always choose to update.

2.3 Starting Composer ME

When you start Composer ME, you must connect to Director on your home network.

Prerequisites

Ensure that you have installed Composer ME and registered on my.control4.com. You may want to sign up for and use Rhapsody® also (a subscription-based music service). See the *Control4 System User Guide* for details.

To start Composer ME:

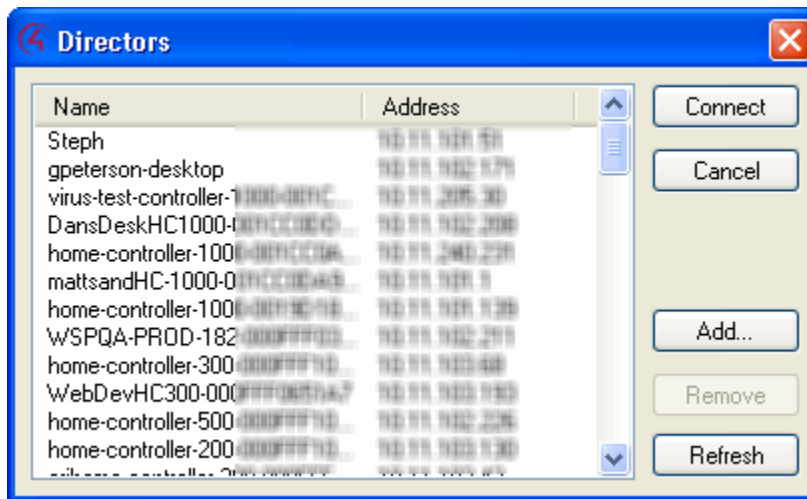
1. From the desktop, double-click the **Composer ME** icon.
2. At the Composer ME startup screen, click **Director on Local Network**.



Note: Even though the *Virtual Director* and *Remote Director* show on the Startup screen, they are not available in Composer ME and are grayed out.

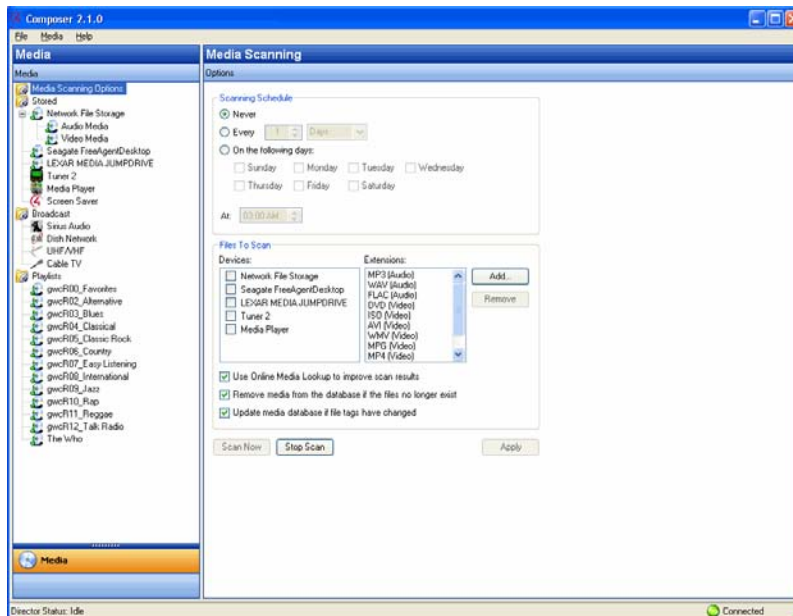
3. From the Directors dialog, select the *Director's* address of the Controller you are setting up.

Composer ME User Guide



Tip: If the Director's address does not appear immediately, click the **Refresh** button. If it still does not appear, contact your Control4 Dealer.

4. Click **Connect**.
5. Composer opens to the main Composer ME interface.



2.4 Refreshing the Navigators

Use the Control4® Composer ME menu bar to refresh your *Touch Screens*, On-Screen Navigators, MyHome apps, and *System Remote Control* whenever you make changes to Composer.

Composer ME User Guide

Prerequisites

Ensure that the Navigators are added and identified to the Control4 system. Your Control4 Dealer or Installer can help you.

To refresh the Navigators:

In case your Navigators do not automatically refresh after you've made changes to Composer ME, from the menu bar, choose **File > Refresh Navigators**.

Tip: New media shows up automatically in the Navigators unless your device is disconnected or has changed locations. In this case, you may need to identify the device again.

Refer to the *Control4 System User Guide* to test your Navigator features.

2.5 Closing Composer ME

Use the Control4® Composer ME **File > Exit** or **Exit Composer** options to close the application.

Before Composer ME exits, the application asks you if you want to back up your project. It is always good practice to do so.

3. Introducing Composer ME

The Control4® Composer ME interface lets you:

- Add and scan media to your Controller (for example, Home Controller HC-200, HC-300, or HC-1000).
- Create playlists of MP3, AAC, FLAC, or WMA files saved on your Controller's hard drive in the Media Database (requires a HC-1000 Controller).

Prerequisites

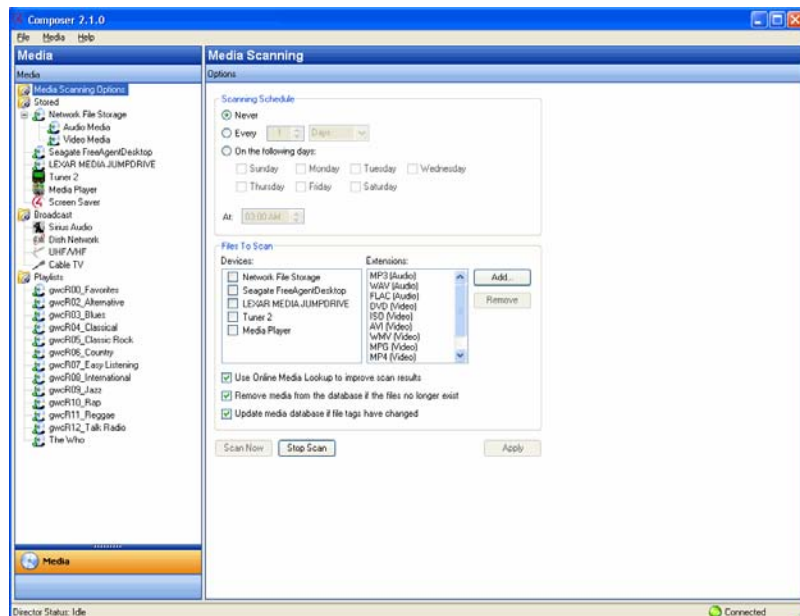
Ensure that Composer ME has been installed.

To use Composer ME:

1. Start **Composer ME**.
2. Connect to the **Director on Local Network**. (See "Director's Dialog" section below.)
3. View the **Media** pane (see below).

Composer ME User Guide

Composer ME interface:

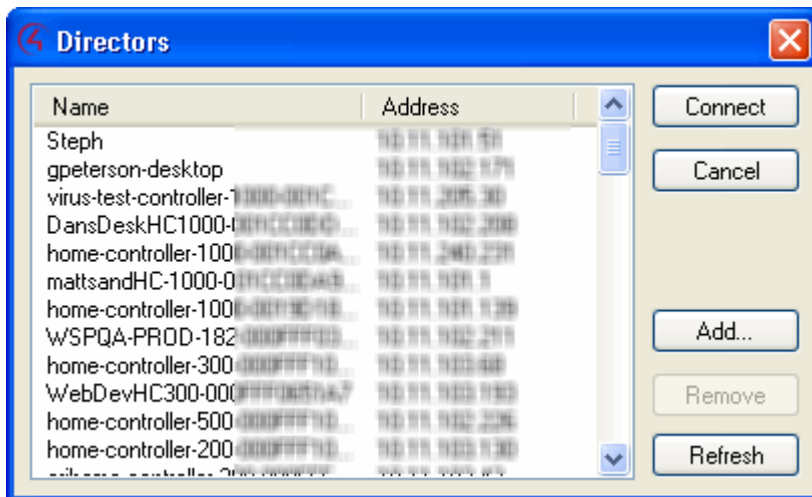


When you add or scan media (Media Scanning Options), you can then view and select the stored/broadcast media and playlists from the *Touch Screens* or On-Screen Navigators: TV monitor, Touch Screens, MyHome apps, and *System Remote Control* (in List format).

3.1 Directors Dialog

After you start the Control4® Composer ME application, the following dialog appears; you need to use the Controller's network address to connect to the *Director*.

Directors Dialog:



Composer ME User Guide

Connecting to a Director on the *home network* lets you set up your media cover art and *metadata* on your *Controller* so it is viewable on the Touch Screens, MyHome apps, or On-Screen Navigators. Each Director has an associated address.

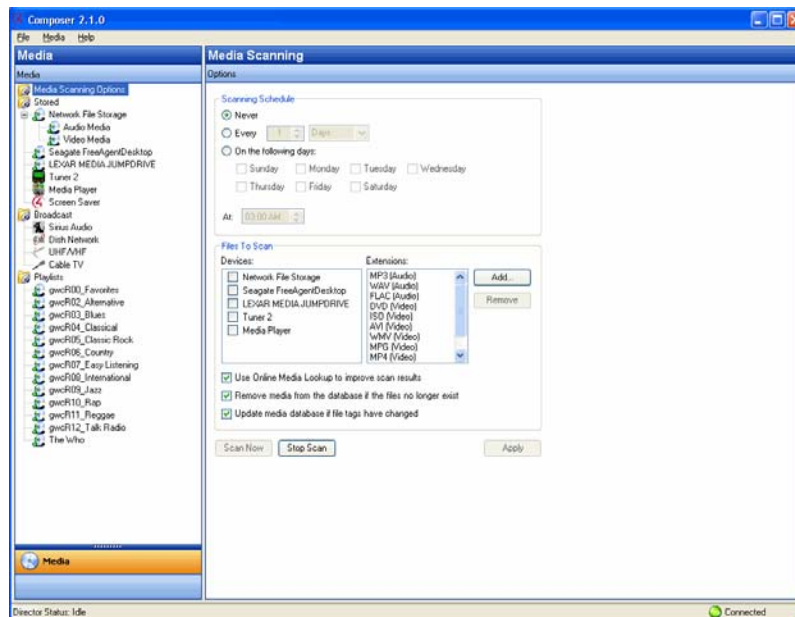
Director's Dialog buttons:

- **Connect.** Connect to the Director on your Controller.
- **Cancel.** Cancel and close the Director dialog.
- **Add.** Launch a dialog that lets you add the Director's address of the Controller to which you are trying to connect.
- **Remove.** Lets you remove a Director.
- **Refresh.** Update the Director list to display the recently added Directors.

3.2 Media View

Use the Control4® Composer ME Media view to add or scan your media.

Media view (same view as the main screen after startup):



There are two (2) types of media that can be added or scanned in a Control4 system:

1. Stored Media
2. Broadcast Media

The other two (2) categories are to scan media and manage playlists.

Composer ME User Guide

Note: The AMG lookup service has been switched to Gracenote®. The Sony 777 Disc Changer uses Gracenote, but the Media Controller cannot access album, title, or artist information from AMG. CDs, however, can be imported and will show up in the Media database with a date and time stamp.

Other Media Managers: You can use other media managers, for example, iTunes, Windows Media player, and MediaMonkey to create MP3s. You can still use Composer ME to add files to the Control4 system.

3.2.1 Stored Media

Media types supported:

- **CD.** Store CD selections and view the Cover Art, Album, Artist, and Genre type (such as Rock or Country).
- **DVD or Disc Changer.** Store DVD and CD selections and view the Cover Art, Title, Info, Results, Media, and Disc List.
- **Digital Audio Player.** Store MP3, HDD, AAC, or FLAC music selections and view the Cover Art, Album, Artist, and Genre type (such as Rock or Country) on a Home Controller HC-1000 V3 hard disk or other digital audio player.
- **Network File Storage.** Store MP3, HDD, AAC, or FLAC music selections and view the Cover Art, Album, Artist, and Genre type (such as Rock or Country) on a hard disk attached to the network or a USB drive.

3.2.2 Broadcast Media

Media types supported:

- **Direct TV.** View Direct TV channel options including Station ID, Genre, and Music Channel.
- **Dish Network.** View Dish Network channel options including Station ID, Genre, Rating, and Music Channel.
- **Cable TV.** View Cable channel options, including Station ID, Genre, Rating, Music, and Channel.
- **UHF/VHF.** View UHF channel options including Station ID, Genre, Rating, and HDTV.
- **AM/FM/XM.** Scan AM, FM, and XM stations.
- **Internet radio.** Set up Internet radio stations.

3.3 Menu Options

Control4® Composer ME menu options:

- **File menu.** Connect to the *Director* on your *home network*, refresh Navigator devices with new media information, or exit Composer ME.
- **Media menu.** Create a new playlist, or clear, export, and import media lists. See “Media Menu” below.
- **Help menu.** View the Composer ME online Help and software version.

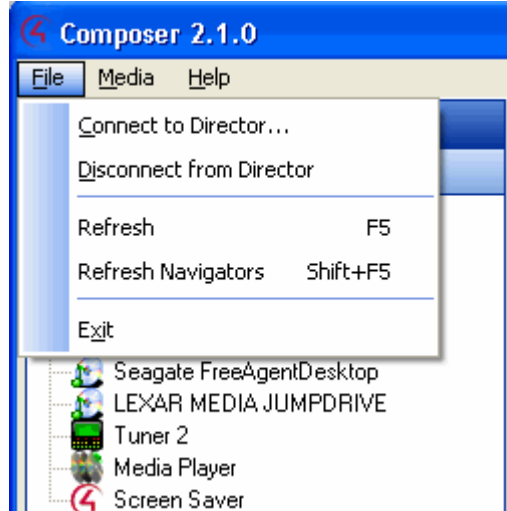
Composer ME User Guide

3.3.1 File

The File menu lets you perform project file management tasks, connect to Director, start Interviewer, and refresh Composer ME and the *Navigator*s, including the Touch Screen and On-Screen Navigators. The file management options relate to the Composer ME project files you back up on your PC (they have a .c4p extension). Project files always save by default to the 'My Documents' directory.

When you set up a Control4 system, you create live project configuration information on the *Controller* that is backed up to a project file on your PC. This lists specific information about each system, including devices, connections, configuration, programming information, and media.

- **Connect to Director.** Connects you to the Director residing on the Controller. When you connect, project configuration information from the Controller is displayed on the Composer ME screen.
- **Disconnect from Director.** Disconnects you from the Director. Composer ME prompts you to back up your project before disconnecting you from the currently-connected Director. This option is available when connected to the Director.
- **Refresh.** Refreshes the Composer ME screen with the current information from Director.
- **Refresh Navigators.** Refreshes the Navigators with the latest information from Director.
- **Exit.** Exits Composer. Composer ME prompts you to back up your project prior to exiting the software and returning to the desktop. Control4 recommends that you always back up your project before you exit.



Composer ME User Guide

3.3.2 Media

From the Media menu, the media either has been scanned or manually added to the *Media Database*. After an item is added to the Media Database, the cover art and *metadata* about the media is viewable and selectable from any of the Navigators.

Tip: Control4 recommends that you use the Export Media List (see below) feature which lists of all your media saved to the hard drive on your PC.

The following options are available:

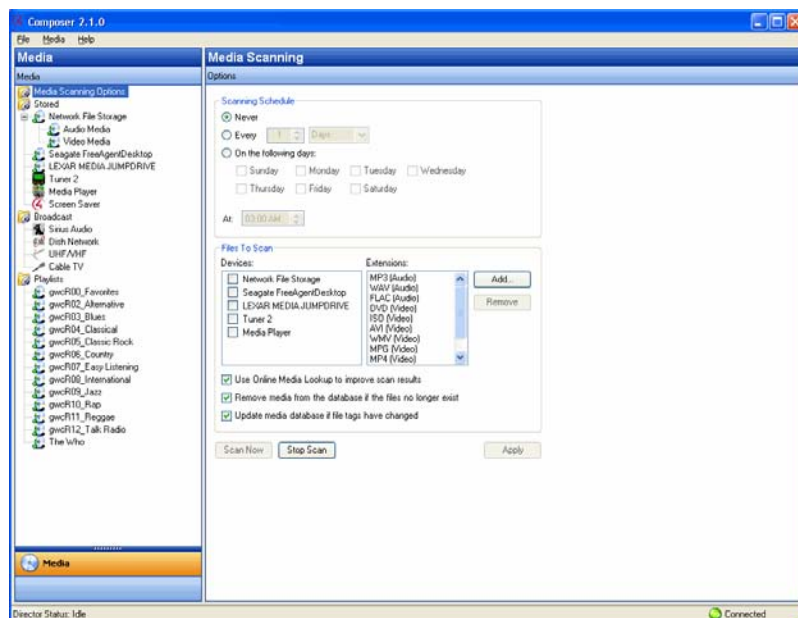
- **Clear Media List.** Clears the media list associated with the highlighted device from the Media Database.
- **Export Media List.** Exports a media list for the selected device from your Controller to your PC.
- **Import Media List.** Imports a media list from your PC to your Controller.
- **Export Playlists.** Exports a playlist from your Controller to your PC.
- **Import Playlists.** Imports a playlist from your PC to your Controller.
- **Import DVD List from File.** Imports a Microsoft Excel list of DVD titles for a Disc Changer.
- **New Playlist.** Creates a playlist of MP3, *AAC*, or *FLAC* files. The playlist is available from any Touch Screen or On-Screen Navigator. Add albums, remove songs, re-order songs, etc. **Note:** If you remove songs from a playlist, it does not remove them from the Media Database.
- **Delete Playlist.** Removes a playlist.
- **Rename Playlist.** Renames a playlist.
- **Tag media files.** Used for OS 2.0 conversion of media files so all media players can see the same tags.

3.3.3 Help

From the Help menu, you can access the online help of this *Composer ME User Guide* with Index, Glossary, and Search options, or check the version of your Composer software and Director component.

4. Setting Up Media and Playlists

Before you can view and select your media from the Control4® Navigators, the Control4 system needs to be able to recognize it. So you first need to add and scan your media to the Controller using the Composer ME Media view. See “Auto-Scan Media in Composer ME” in this document.



To add and scan songs and albums for playlists, they must be available in MP3, AAC, or FLAC format on a PC, Controller, or network share. With the **MP3**, **AAC**, or **FLAC** files you add and scan, you can create playlists and save them either to the Controller’s hard drive or a network storage drive.

Tip: Composer ME requires that your system is functioning correctly before using your media. For example, if you have a Disc Changer that does not appear in the left pane of the Media view, there’s no Disc Changer in the system to add media to it. Contact your Control4 Dealer if this is the case.

Prerequisites

Ensure that the appropriate devices have been added and identified to your Control4 system. Your Control4 Dealer or Installer can do this for you.

To add and scan available Digital Audio Player media:

1. Start **Composer ME** and connect to **Director**.
2. In the Controller pane, click **Add**.

Tip: If you get a dialog box that states you cannot add media, make sure your Control4 Installer or Dealer has identified your Controller for you.

3. Browse to the directory of music files that you want to add or scan.

Composer ME User Guide

After the files have been added, the scan automatically starts. In a few moments, the media is scanned and you will see a list of albums appear. You might see the On-Screen Navigator update during this process also.

Tip: Another way to add files from a network share to a Controller is to go to the Windows **Start** menu, and select **Run**. Type `//<Controller's IP Address>/media/audio/music/<Artists>/<Albums>` and copy the files there.

4. Refresh your Navigators.
5. The media is now selectable for viewing from the Touch Screens, On-Screen Navigators, and System Remote Control.

4.1 Setting Up Media on a CD or Disc Changer

When setting up a Control4® Disc Changer (or CD Changer), you can add and scan media according to the controls available on your Disc Changer. Adding and scanning populates the media information to the Media Database, which lets you view the media from your Touch Screens, On-Screen Navigators, and System Remote Control.

Notes:

The AMG c4lookup service from previous releases has been changed to Gracenote® and Control4 has not implemented a UI for browsing CDs stored in a Disc Changer in OS 2.0. Use an older navigator (prior to OS 2.0) that supports this functionality if this is important to you.

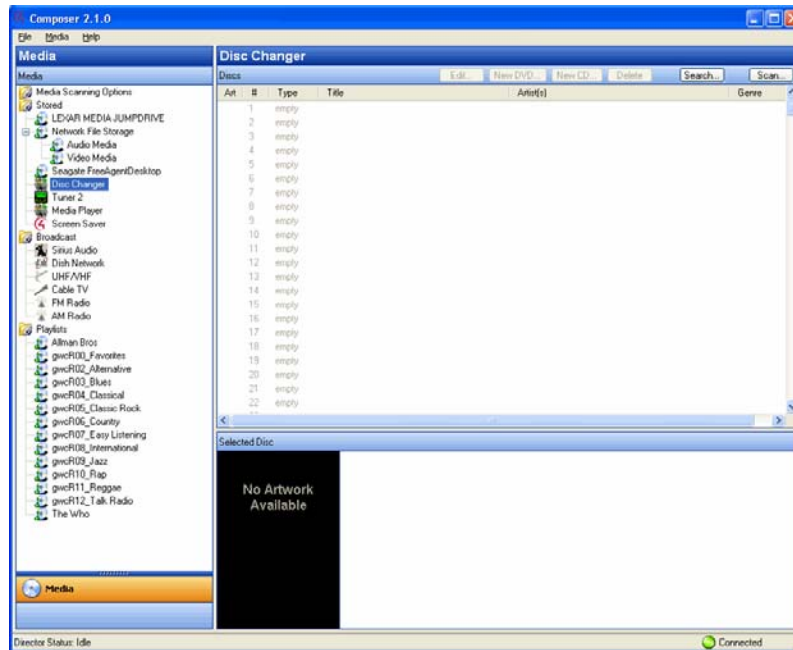
Other Media Managers: You can use other media managers, for example, iTunes, Windows Media player, and MediaMonkey to create MP3s. You can still use Composer ME and Composer HE to add files to Control4.

THE SONY 777 DISC CHANGER USES GRACENOTE, BUT THE MEDIA CONTROLLER CAN NO LONGER ACCESS ALBUM, TITLE, OR ARTIST INFORMATION FROM AMG (THE PREVIOUS LOOKUP SERVICE). CDS, HOWEVER, CAN BE IMPORTED AND WILL SHOW UP IN THE MEDIA DATABASE WITH A DATE AND TIME STAMP.

In the Media pane, if you select **CD** or **Disc Changer**, the following options are available. In some cases, you select an entry and click a button, or just click one of these buttons (Search and Scan):

- **Edit.** Edit an entry's metadata (Title, Artist, Director, Genre, etc.).
- **New DVD.** Add new DVDs to the Media Database.
- **New CD.** Add new CDs to the Media Database.
- **Delete.** Delete an existing entry.
- **Scan.** Scan the media on your CD or Disc Changer to the Media Database (recommended if available).
- **Search.** Search for media titles on your CD or Disc Changer in the Media Database.

Composer ME User Guide



The following steps show how to add media to the *Media Database* using these options.

Prerequisites

Ensure that the CD or Disc Changer has been added and identified in the Control4 system. Your Control4 Dealer or Installer can do this for you.

To scan media on a CD Changer to the Media Database:

1. Select the **CD Changer** in the Media pane.
2. In the Disc Changer pane (right pane), click **Scan**.
3. The scan results appear in the Discs pane. After you refresh your Navigators, you are ready to play music.

To search media on a Disc Changer to add to the Media Database:

1. In the Disc Changer pane, click **Search**. The search dialog appears.
2. Type the **DVD name** in the blank box. For example, type 'A Beautiful Mind,' and then click **Search**. The 'DVD Title' matches appear in the Search Results window.
3. Use the scrollbar if necessary to find the appropriate DVD title.
4. Select the DVD title, drag it directly over the empty line item in the Disc Changer list, and then select it.
5. Click **Finished**.
6. Repeat the previous steps for the DVDs/CDs in the Disc Changer that you want to add to the Media Database.
7. Refresh your Navigators. The media you added is now available to view in the Navigators.

Composer ME User Guide

To add and search using the New DVD or New CD options:

1. Select **CD** or **Disc Changer** in the Media pane.
2. Select an 'empty' line item for the New DVD and New CD buttons to appear.
3. Click either **New DVD** or **New CD** as appropriate.
4. The New Movie or New Album dialog appears. In the Title box, enter the **DVD** you want to play, for example: 'A Beautiful Mind.'
5. Click **Search**.

New DVD:

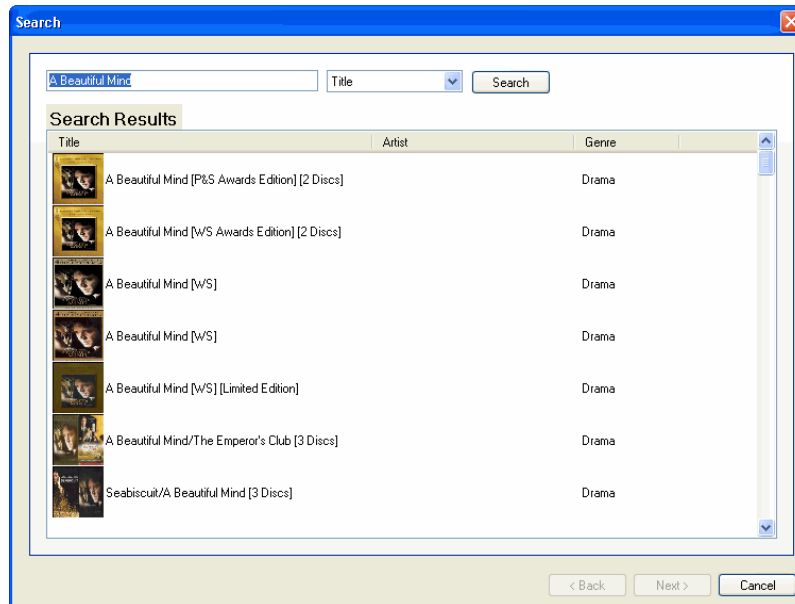
The screenshot shows the 'New Movie' dialog box. It has a title bar with 'New Movie' and a close button. The dialog is divided into two tabs: 'Movie' and 'Cast and Synopsis'. The 'Movie' tab is active and contains the following fields and buttons:

- Title:** A text input field followed by a 'Search...' button.
- Director:** A text input field.
- Run Time:** A text input field.
- Studio:** A text input field.
- Released:** A text input field.
- Genre:** A text input field.
- Rating:** A text input field.
- Location:** A dropdown menu with '1' selected.

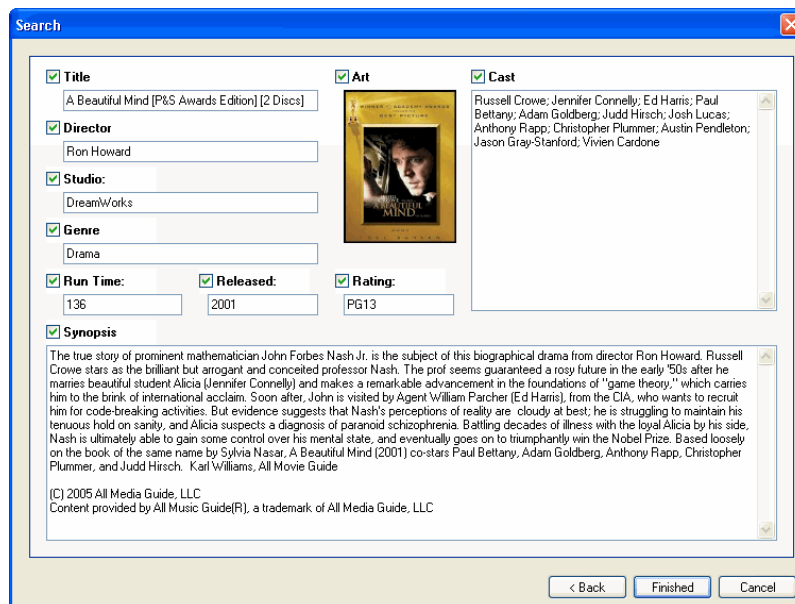
Below the 'Movie' tab is an 'Art' section. It features a placeholder box with the text 'No Artwork Available'. To the right of this box are three buttons: 'Find Art File...', 'Paste From Clipboard', and 'Remove Art'. At the bottom of the dialog are 'OK' and 'Cancel' buttons.

Composer ME User Guide

The following results appear:



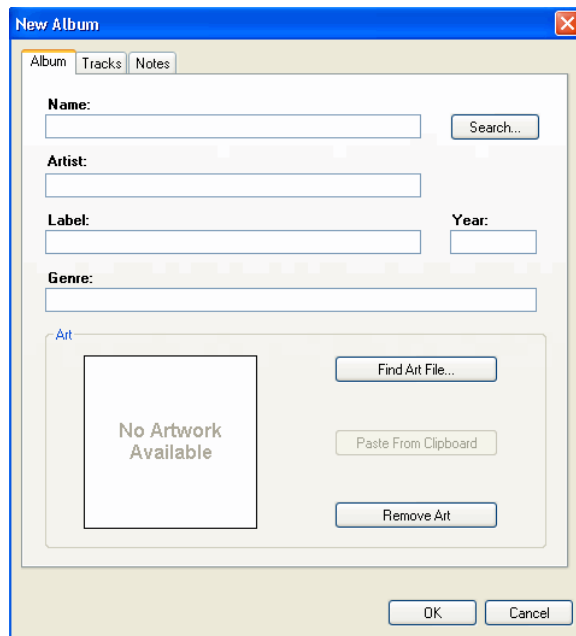
Select an entry to get detailed results:



New CD:

Similar results occur as with the New DVD option. Follow the same steps.

Composer ME User Guide



6. When the Search dialog appears, use the scrollbar if necessary to find the appropriate cover art, and highlight it.

You can change the search criteria, and search again if necessary. The possible matches from the Web database appear in the Search Results window (see above).

7. Click **Next**. You can choose which information to import, and edit any associated information before adding the media to the Media Database (see screen above).
8. Click **Finished**.
9. Click **OK**.
10. Refresh your Navigators. The DVD is available to view in the CD or DVD pane and on the Touch Screens, MyHome apps, and On-Screen Navigators.

Note: If no cover art is found in the file's metadata, then no cover art is associated with the music unless the system is registered in 4Sight, and you can go to the online media lookup (Media view > Edit > Name > Search > Select > Next) to obtain the cover art for your music. Check with your Control4 Dealer or Installer for details.

4.2 Setting Up Videos for a Media Player

Your Control4® Dealer or Installer can help you get set up to play videos on your Control4 Media Player. Your videos must already exist on a *network-attached storage* drive before they can be scanned for the Media Player.

For information about scanning files for the Media Player, see the *Control4 Media Player Installation and Setup Guide* or the *Control4 Media Player User Guide*.

4.3 Auto-Scan Media in Composer ME

This section applies to a Sony CX777ES Disc Changer.

The benefits of running a Control4® Disc Changer with bi-directional communications (RS-232), for example, Sony CX777ES, is that you can scan your DVDs or CDs stored in the Disc Changer to identify, index, and automatically apply cover art and media information. You can have your Control4 Dealer or Installer configure your Control4 system in Composer ME to scan media automatically, or you can set a manual scan using the **Scan** button. The default is to scan media manually.

Notes:

1. If you scan a DVD or CD, and the media is not recognized, it will be titled "unknown." You can edit the DVD or CD's metadata and manually provide this information from either Composer ME or the Navigators. If this DVD or CD is then changed to a different slot, the system will apply this same information.
2. Because media scanning has been moved to the background, the scanning status is only available through Director status messages. To do this, you can either watch the Director status line or re-select the media to view the content that has been scanned.
3. Composer ME does not need to be open to scan media. This lets you use other media managers (iTunes, Windows Media Player, etc.).

Prerequisites

Ensure that the devices you want to scan have been added and identified in the Control4 system. Your Control4 Dealer or Installer can do this for you.

If you want to schedule regular scans, ensure that your network-attached storage is set up and is accessible from Composer ME.

To schedule a regular scan of media from a network-attached device for a Media Player, for example:

1. From the Composer ME main screen, select **Media Scanning Options**. To scan your media now (and not set up a scheduled scan), click **Scan Now** and skip the Scanning Schedule in Step 2.
2. In the Options pane, set the schedule as follows:
 - **Scanning Schedule**. Select one.
 - **Never**. Select if you never want to schedule an automatic scan.
 - **Every x Days or Weeks** (up to 10). Select the frequency to scan.
 - **On the following days**. Select Sunday through Saturday.
 - **At <time>**. Use the **up** and **down** arrows to select the time. Highlight **AM** or **PM** and type the value: AM or PM.
 - **Files To Scan**. Select a device and extension.
 - **Network File Storage**. Select if you have a NAS you want to scan.
 - **USB Drive**. The manufacturer's USB drive appears here. Select if you have a USB drive you want to scan.
 - **Extensions**. Use the **up** and **down** arrows to choose the file type to add or remove. To add a file extension (if it doesn't appear in the list), use the **down** arrow to select the

Composer ME User Guide

extension, select **Video** or **Audio**, and then click **Add**. Click **Remove** to remove that file type from the list.

- **Use Online Media Lookup to improve scan results.** Check if you don't want the search to access the Internet for every format lookup, for example, a specific title or cover art.
Tip: Properly tagged files will result in must faster access.
 - **Remove media from the database if the files no longer exist.** Check to remove database information when a media file has been deleted. Be careful, however, because if for example you disconnect a USB drive with media on it, the database files will delete them if checked, and you may not want to delete them if you use the drive again.
 - **Update media database if file tags have changed.** Check to have the database updated if the metadata changes.
3. Click **Apply**.
 4. Click **Scan Now** to start the scan immediately or **Stop Scan** if you've started the scan and want to stop it.

4.4 Testing the Media Connection

To test control of media through the Control4[®] Navigators (System Remote Control, On-Screen *Navigator*, *LCD* Navigator, or Touch Screens), use the steps outlined in the *Control4 System User Guide*.

Suggested test items:

- Play an album
- Add an album or track to the Now Playing queue
- Play a *playlist* created in *Composer*
- Create a playlist at a Navigator (such as one of the Touch Screens)
- Play multiple streams of music (play different music in different rooms)
- Play a movie on the Television

4.5 Setting Up Media for Television Stations

Use the Control4[®] Composer ME Media view to set up a broadcast television station and listings for display in the Navigators.

Prerequisites

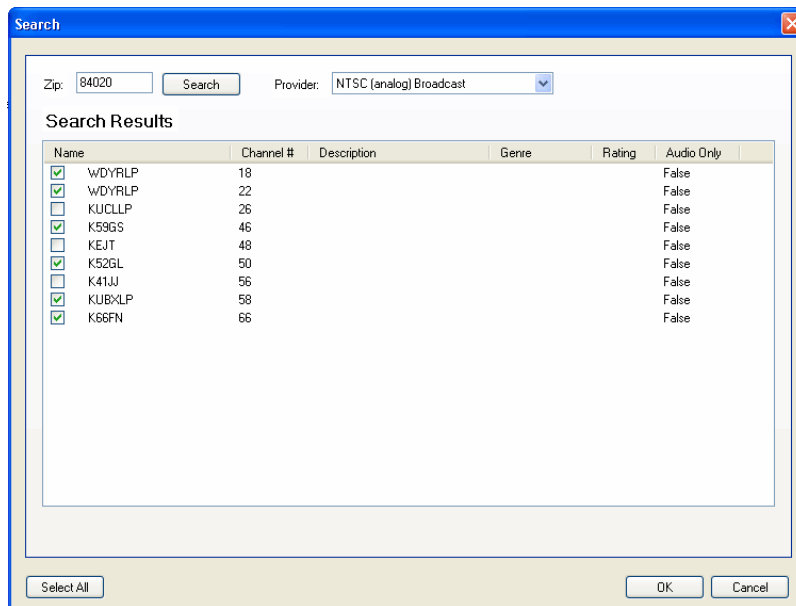
Ensure that your television is added and identified in the Control4 system. Your Control4 Dealer or Installer can help you do that.

To set up media for broadcast television channels:

1. Highlight **UHF/VHF** or another broadcast media type.
2. Click **Search**.
3. When the dialog appears, type your **zip code** in the box.
4. Click **Search**, and use the pull-down menu to select **Local Broadcast Listings**. The available channels are populated according to the Search Results.
5. Check the boxes to select the desired channels that you want to appear on the Touch Screens, MyHome apps, On-Screen Navigators, and System Remote Control.

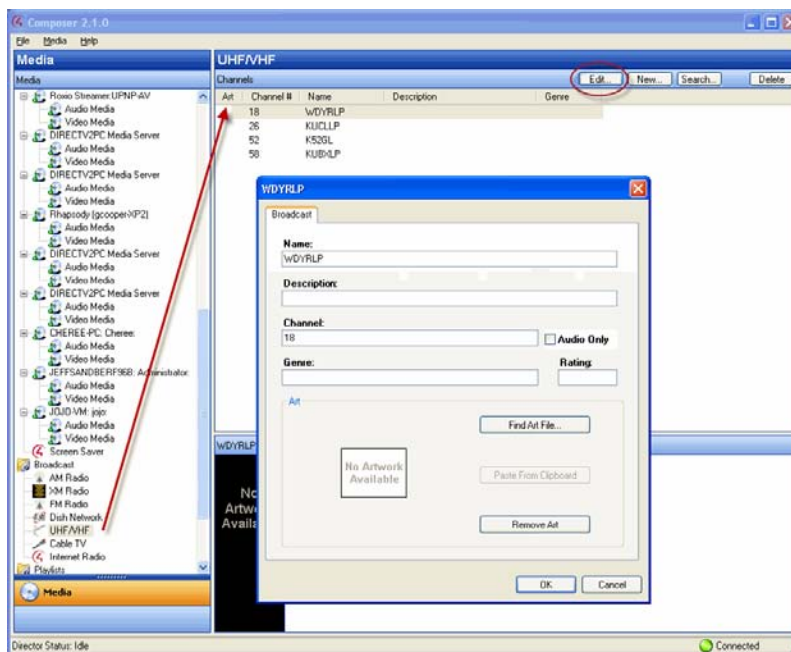
Composer ME User Guide

- Click **OK**.



The selected stations populate in the UHF/VHF pane. You can edit the information as needed; add a description, genre, etc.

- (Optional) To edit a channel, select the channel, and click **Edit**. The following dialog appears.
- Edit the information and click **OK**.



- Refresh your Navigators. The media can now be selected to view in the Navigators.

Copyright © 2012 Control4. All Rights Reserved.

4.6 Setting Up Media for Radio Stations

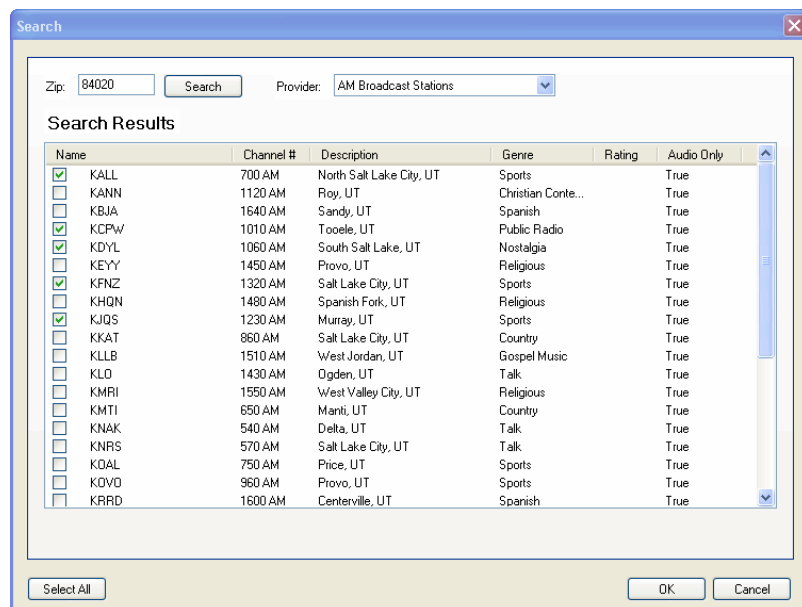
Use the Control4® Composer ME Media view to set up radio station listings to display on the Navigators.

Prerequisites

Ensure that your devices are added and identified in the Control4 system. Your Control4 Dealer or Installer can do that for you.

To set up media for radio stations:

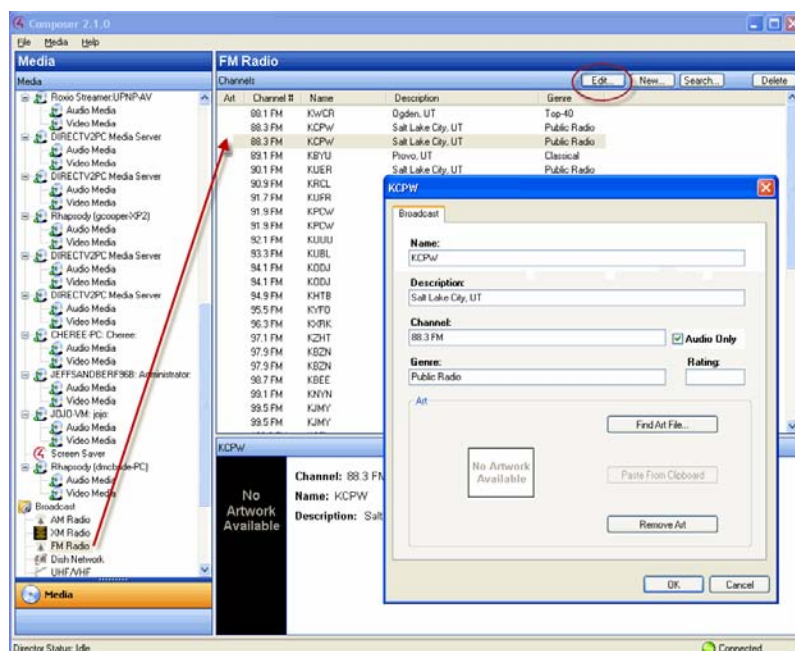
1. Under Broadcast, select the radio type: **AM Radio**, **FM Radio**, or **XM Radio**.
2. Click **Search**.
3. When the dialog appears, type your **zip code** in the box.
4. Click **Search** again. Use the pull-down menu to select **AM Broadcast Stations** or **FM Broadcast Stations** if applicable. The available stations are populated in the Search Results window.
5. Check the boxes to select the desired stations that you want to appear on the Touch Screens, On-Screen Navigators, MyHome apps, and System Remote Control for that radio type.
6. Click **OK**.



The selected stations display in the AM or FM Radio pane.

7. (Optional) To edit a station, select the station, and then click **Edit**.
8. Edit the information, and then click **OK**.

Composer ME User Guide



9. Refresh your Navigators.
10. Repeat Steps 1-5 for each radio broadcast (AM, FM, XM) you want to set up. Set up each one separately. The media is now ready to view in the Navigators for selection.

4.7 Setting Up Internet Radio

Note: Internet radio ONLY supports MP3 streaming radio stations.

Use the Control4® Composer Media view to add, view and select Internet radio stations that you can play from Touch Screens, MyHome apps, or On-Screen Navigators.

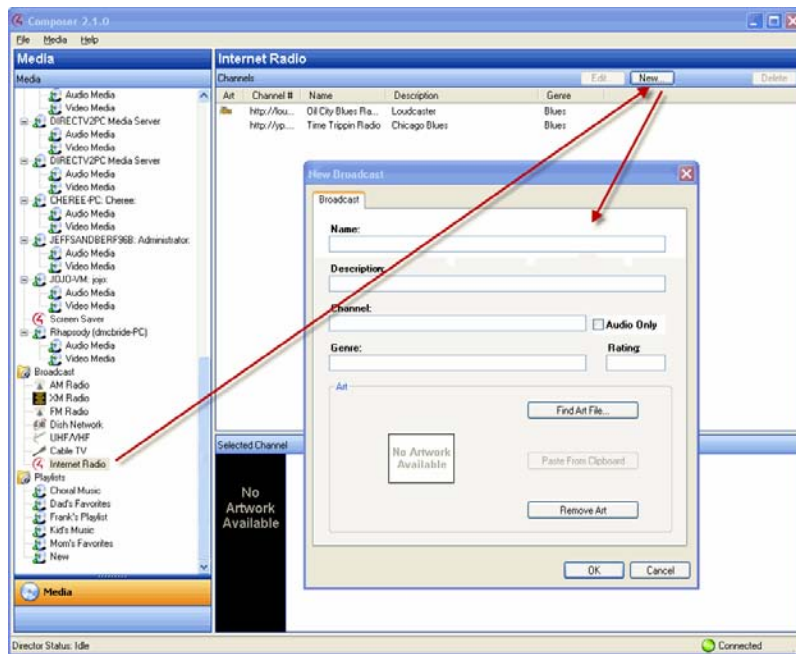
Prerequisites

1. Ensure that the Controller is installed and identified as directed in the Controller's installation guide.
2. Ensure that the Internet radio stations you add are in MP3 format. You'll need to create a new form for each station you add.

To configure Internet radio:

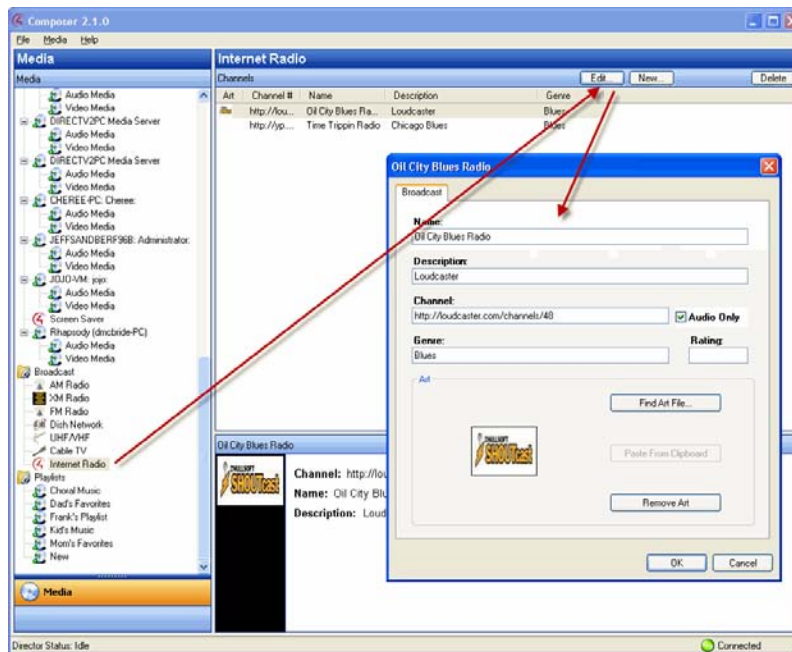
1. Start Composer and connect to a Director.
2. Click the **Media** view.
3. From the Media list, click **Internet Radio**.
4. In the Internet Radio pane, click **New**.

Composer ME User Guide



5. Fill out the form:
 - a. **Name:** Add the name of the station.
 - b. **Description:** Add a description that's meaningful.
 - c. **Channel:** Add the URL for the channel. **Note:** Locate the URL of the MP3 stream that starts with **http://...**
 - d. **Genre:** Add a genre if appropriate.
 - e. Check **Audio Only** for listening.
 - f. **Cover Art:** If you'd like, you can copy the radio station art to your list. In a browser, go to the link and click **Images**. Click **Find Art File** to locate an image, copy it to your clipboard and then click **Paste from Clipboard**.
 - g. Click **OK**.

Composer ME User Guide



6. Go to the Touch Screen, MyHome apps, or On-Screen Navigator and select the **Listen > Station**.
Note: If you have several sources, Internet Radio appears under Sources.

4.8 Using External Storage Devices

Access digital music from an external storage device attached to your Control4® system. External storage devices include USB flash drives, USB external hard drives, or a PC's hard drive located on the home network. Set up your music according to the external storage device and networked file storage as described here.

Note: When you remove the external drive (network, USB, etc.), the music is no longer available. To access the music again, re-attach the external storage device, and refresh your Navigators.

Prerequisites

External storage devices must have media stored in unprotected **MP3**, **AAC**, or **FLAC** formats.

To attach and scan external storage devices using a USB connection:

1. Power on the external storage device.
2. Use the documentation provided with your Controller to attach the external hard drive to the USB port.
3. After connecting the external storage device, scan the music on the external device connected to the Controller to make it available on the Control4 system. Highlight the Controller to which the external device is connected.
4. Click the **Media** view.
5. In the view, select the external storage device.
6. Click **Scan**. When scanning, the media appears as it is located on the Controller.

Composer ME User Guide

Note: You can add media from the external storage device when connected to the Controller, however, Control4 recommends that you connect your external drive directly to the PC where you want to copy media, and then attach it to the Controller for scanning.

To access and scan the network-shared storage devices:

1. Use the documentation provided with your operating system to create a shared network drive.

Example: Using Windows XP to make a local C:/ Drive directory available on the network, right-click the folder and select **Sharing and Security**. Click **Share this folder**.

2. Configure the username, password, and workgroup (or domain) for the network file share. This information varies between types; contact your Control4 Dealer or Installer if you need help with this information.
3. Highlight the **Network File Storage** object.
4. Click **Add** or **Scan**.

4.9 Setting Up Playlists

Use the Control4® Composer ME Media view to set up a playlist to play songs and albums from your Touch Screens, MyHome apps, On-Screen Navigators, and System Remote Control.

Prerequisites

Ensure that the appropriate audio devices are added and identified on the Control4 system. Ensure that you have scanned your media in the Digital Audio player. Your Control4 Dealer or Installer can help you do this.

Playlists are designed exclusively for streaming media in Digital Audio. If you subscribe to the Rhapsody® Music Service, then Rhapsody playlists can be created using a *Navigator*. In OS 2.0 and later, playlists can include CDs/DVDs, broadcast channels or stations, or Internet stations, but they are a separate playlist from those in Rhapsody.

Note: To set up a Rhapsody subscription on behalf of the user or yourself, obtain a Rhapsody account at <http://www.control4.com/rhapsody>, and then refer to the information found in the *Control4 System User Guide*.

To create a playlist:

1. From the Media menu, select **New Playlist**.
2. A 'New' playlist appears. You can rename it now, or later you can right-click and select **Rename Playlist** to change the name. **Example:** Change **New** to **Frank's Playlist**.
3. Drag the list of songs to the playlist.
4. (Optional) Have your Control4 Dealer or Installer add any albums or songs you want to the playlist. See *Control4 System User Guide* for details.
5. Create, edit and play songs from your playlists using your Touch Screens or On-Screen Navigators.

Composer ME User Guide

To delete albums or songs from the playlist:

1. After you add the albums, select the playlist that contains the songs to delete.
2. Right-click on the songs you don't want in your playlist, and select **Delete**.

Tip: To remove multiple songs, press **Shift**, select the songs, and then right-click **Delete**.

4.10 Editing Media Information

Use the Control4® Composer ME Media view to edit CD or DVD media information. You can edit media information also on the Touch Screens, MyHome apps, or On-Screen Navigators.

Prerequisites

Ensure that the appropriate media *devices* have been added and identified to the Control4 system. Your Control4 Dealer or Installer can help you do this.

To edit CD information:

1. In the Media view, double-click the device on which you want to edit a CD, such as a CD Changer, Disc Changer, Controller or Digital Audio.
2. Click the **Edit** button, or double-click the media under <Media> Title.
3. To edit and enter any changes, click the Album tab (for music), for example. Edit the information in the **boxes** under Name, Artist, Label or Genre. Click the Tracks and Notes tabs to view and edit Track Titles and Notes. Click **Find Art File** or **Remove Art** to change the cover art. When finished, click **OK**.
4. Click one of the **Search** buttons next to the Name to search the database for similar entries.
5. To select a search result, select the album **Title** and double-click, or click **Next**. At the next screen, view and edit the album information, including Name, Artist/Composer, Label, Genre, Year, Art, and Notes.
6. Make your changes, and click **Finished**. To return to the previous screens, click **Back**.

To edit DVD information:

1. In the Media view, select the Disc Changer or DVD, and then select a movie.
2. Click the **Edit** button, or double-click the title under **Discs**.
3. Click the **Movie** tab. Edit the Title, Director, Studio, Genre, Run Time, Release date and Rating as desired.
4. Click the **Cast** and **Synopsis** tab. Click in the **Cast** and **Synopsis** boxes to make the desired changes.
5. Click the **Movie** tab.
6. Click **Search** to search the database for other DVDs.
7. Double-click the desired **DVD**, and edit the information as desired according to the previous steps.
8. When you are finished, click **Finished**.

5. Other Composer ME Tasks

Use the Control4® Composer ME to perform other media-related tasks (see the sections below).

- “Clearing a Media List”
- “Exporting a Media List”
- “Importing a Media List”
- “Updating Composer ME”

5.1 Clearing a Media List

Use the Control4® Composer ME Media menu to clean out information (*metadata*) about albums and songs.

Prerequisites

Ensure that media has been added and identified to the Control4 system. Your Control4 Dealer or Installer can help you do that.

To clear a media list:

1. Select the device on which you want to clear the media information. **Example:** Digital Audio.
2. From the Media menu, select **Clear Media List**. This removes the information including the title, Cover Art, and related information from the Media Database.

Note: This option does not remove the media files.

5.2 Exporting a Media List

Use the Control4® Composer ME Media menu to export a media list from your *Media Database* to your PC.

Prerequisites

Ensure that the device to export to and the media have been added and identified in the Control4 system. Your Control4 Dealer or Installer can help you with that.

To export the Media List:

1. Select the **device** on which you want to export the Media List. **Example:** Digital Audio.
2. From the Media menu, select **Export Media List**.

This saves a copy of the file that contains all the title art and information from the Media Database to your PC.

IMPORTANT: This option *moves* the media files.

5.3 Importing a Media List

Use the Control4® Composer ME Media menu to import a media list from your PC to your Controller's *Media Database*.

Prerequisites

Ensure that the device to export to and the media have been added and identified to the Control4 system. Your Control4 Dealer or Installer can help you with that.

To import the Media List from your PC to the Media Database:

1. Select the **device** on which you want to import the Media List. **Example:** Digital Audio.
2. From the Media menu, select **Import Media List**.

This saves a copy of the file that contains all the title art and information from your PC to your Controller's Media Database.

IMPORTANT: This option does *not* move the media files.

5.4 Updating Composer ME

Use Control4® Composer ME to update the software to a new version.

You can update three (3) ways:

1. Help menu
2. Windows Start menu
3. Run the Composer ME install

Prerequisites

Ensure that Composer ME has been installed on your PC.

To update Composer ME:

1. Update according to these options.
 - From the Help menu, select **Check for Updates**.
 - From the Windows Start menu, select **Start > All Programs > Control4 > Composer > Update Composer**.
 - Run the installation.
2. Follow the on-screen instructions to complete the update.

6. Glossary

4

4Sight: An Internet service that provides a connection to the Home-Automation System any time and from any place worldwide.

A

AAC: Advanced Audio Coding. A successor to the MP3 format. A standard, lossy compression and encoding scheme for digital audio. Touts better sound quality.

AV: Audio Video

C

CD: (Compact Disc) - An optical disc that stores digital data. This format is compatible with Control4 products.

Composer: The Control4 software used to design and define a Control4 Home-Automation System.

Composer Pro: Composer is used to set up and configure Control4 devices to communicate with each other in a Home-Automation System.

connection: Binding or linking devices together in Composer so they can communicate with each other.

contact: Contacts are generally used to monitor the status of something (door, window, water sensor, etc.) and can be hooked up through a security panel or directly using a Control4 Controller or Contact/Relay Extender. Contacts connected to a Control4 Controller or Contact/Relay Extender can be configured either as NC (normally closed) or NO (normally open).

Control4 system: A Home-Automation System designed and developed by Control4.

Controller: The main device that makes Home Automation possible. There may be multiple Controllers within a Control4 system. The Controller that runs Director is referred to as the Primary Controller.

D

device: A component that requires a device driver; code that is used to allow the Control4 system to work with that device.

device driver: Every device in the Control4 system needs a corresponding device driver to control the device.

Digital Audio Player: Provides digital audio streaming capabilities from a Controller with hard disk space for music and movies.

Director: Each Control4 Controller (such as a Home Controller HC-500) ships with pre-installed Director software (Linux based) embedded in the device. The Director communicates with Control4 products and third-party products to enable Home Automation and interaction of individual devices. Director runs the Control4 devices. Composer Pro is the software used to connect to and program a system Director that resides on a Controller.

DVD: (Digital Versatile Disc) – A media format for video and data storage.

Composer ME User Guide

E

Ethernet: Uses Ethernet category 5 (CAT5 or CAT5e) wiring to transfer data. Ethernet uses a star network topology that allows multiple points to communicate to a single point. The Speaker Point® and Mini Touch Screens use Ethernet to communicate to the Control4 Controller.

F

file format: A format used by applications to store/read files.

FLAC: Supported by Control4 for software release 1.8, this is a free, open source, lossless audio codec format that supports tagging, cover art and fast seeking. Audio is compressed with no loss in quality.

H

home network: A network installed in the customer's home that provides an Ethernet or wireless connection so that Control4 devices can communicate with each other.

Home-Automation System: The Control4 system: a line of Home Automation products that communicate with each other over Ethernet, WiFi, or ZigBee for a total Home Automation experience.

L

LCD: (Lighted Crystal Display) - A display used with some Control4 interfaces.

LCD Navigator: An LCD device used to control lighting, music, videos, etc., on an LCD screen.

List Navigator: A System Remote Control device uses a Navigator that lists the options.

M

Media Database: Media information is stored in the Media Database, which will permit users to view the media from the Navigators.

metadata: The information that describes the media: title, cover art, artist, song or movie, genre, etc.

MP3: A music format that makes streaming audio available.

N

Navigator: A Control4 Navigator used with the Control4 system to control lights, music, videos, etc. Navigator is software that the customer interacts with using a Universal Remote Control, On-Screen Navigator, Touch Screen, or LCD Screen.

network-attached storage: A hard drive or network share drive that can be attached to the Control4 system and used to retrieve and play music and movies in the system.

O

On-Screen Device: Allows you to select the controller (Media Controller or Home Theater Controller) in the room that controls the source for the on-screen display.

P

playlist: A list of songs compiled in a list. The list can be compiled by songwriter, album, song type, or any combination.

Composer ME User Guide

programming: A machine-readable artificial language used to express computations that can be performed by a device.

project tree: A tree view in Composer where the project is layered by the larger branches (Home, Office, etc.) and then the lower branches (floor, rooms, etc.), and finally to the leaf level (drivers).

R

Remote Director: Connects you to the home network while working in Composer from a remote location.

S

scan: An electronic read of media for replay on Control4 devices.

switch: An extension of a router that adds more Ethernet ports to support additional devices or clients on the local network.

System Remote Control: A Control4 System Remote Control is a universal solution that replaces System Remote Control devices from other manufacturers, and includes programmable buttons. This System Remote Control can access on-screen (Graphical) Navigators.

T

Touch Screen: A Touch Screen is a Home-Automation System Navigator that controls the home's lighting, music, videos, and other devices on the Home-Automation System.

U

USB: Universal Serial Bus) - A format used with USB sticks that plug in to a USB port on Control4 devices.

V

Virtual Connection: A term used in Composer Pro to indicate a connection outside the network.

Virtual Director: A connection to a virtual Controller only (a PC is the Director host rather than the Controller). Projects created or edited here are benign until the saved project is loaded onto a Controller.

W

WiFi: Uses bi-directional wireless technology to transfer data. WiFi (wireless fidelity) devices "connect" to each other by transmitting and receiving signals on a specific frequency of the radio band using a wireless access point. This technology uses the star network topology. WiFi uses high bandwidth 802.11.

WMA: (Windows Media Audio) – Audio data compression technology developed at Microsoft; an audio file format that competes with MP3.

Z

ZigBee: A wireless network that uses bi-directional wireless mesh network technology to transfer messages from one device to another. Unlike a star network topology where devices can only send messages to each other by sending them first to a single central device (which then delivers the message to the recipient device), a mesh network topology allows the devices to forward messages

Composer ME User Guide

from one device to another, thereby extending the effective range of the network. Uses low bandwidth 802.15.4. 250 devices are allowed per controller but Control4 recommends 125.

ZigBee Pro: The 1.1 version of ZigBee that provides improvements in standardization by: allowing more interoperability with other Control4 devices, support for home automation profiles, and improves the scalability of multiple ZigBee access points.

7. Index

- 4Store, 7
- AAC, 12
- AAC format, 7
- Add Director, 14
- Add new CD, 21
- Add new DVD, 21
- Album tab, 32
- AM radio, add, 27
- AM/FM/XM, 15
- AMG, 7
- AMG lookup, 15
- Audio products, and ZigBee Pro, 8
- Broadcast media, scan, 14
- Broadcast television selection, 25
- Cable TV, 15
- CD, 15
- CD Changer, scan media, 20
- CD Changer, set up media, 19
- CD, add new, 19, 22
- CD, edit information, 32
- Clear Media List, 17
- Composer ME interface, 11
- Composer ME, get started, 8
- Composer ME, update, 35
- Composer, close, 12
- Composer, refresh Navigators, 11
- Connect to Director, 14, 16
- Contact Information, 2
- Copyright, 2
- Cover Art, find, 32
- Cover Art, not found, 23
- Create playlist, 31
- Delete media, 19
- Delete Playlist, 17
- Delete songs from playlist, 32
- Digital Audio, 15
- Digital Audio player, 31
- Direct TV, 15
- Director, startup, 10
- Directors dialog, 13
- Disc Changer, 15
- Disc Changer pane, 20
- Disc Changer, set up media, 19
- Disclaimer, 2
- Disconnect from Director, 16
- Discs pane, 20
- Dish Network, 15
- DVD, 15
- DVD, add new, 19, 21
- DVD, edit information, 32
- Edit metadata, 19
- Exit Composer, 12, 16
- Export Media List, 17
- Export Playlists, 17
- File extension, add, 25
- File menu, 15
- File tags, 17
- Find cover art, 32
- FLAC, 12
- Flash interface, 7
- FM radio stations, add, 27
- GNU, 2
- Gracenote, 2
- Gracenote lookup service, 15
- Gracenote online media lookup service, 8
- Hard disk requirements, 9
- Hardware not supported, 6, 7
- Hardware, and ZigBee Pro, 8
- HDD, 15
- Help menu, 15
- Import DVD List from File, 17
- Import Media List, 17
- Import Playlists, 17
- Installation, 9
- Internet radio, setup, 15
- IO Extender, 7
- iTunes, 8
- Legal Notice, 2
- Local Broadcast Listings, 26
- Media Auto-Scan, 24
- Media Controller limitations, 15
- Media database, 15
- Media Database, scanning and adding to, 19
- Media file tags, 17
- Media list, clear, 33
- Media list, export, 33
- Media list, import, 35
- Media menu, 15
- Media Monkey, 8
- Media pane, 19
- Media Player, 23
- Media Player, and NAS, 23
- Media Player, scanning files, 23
- Media scanning, status messages, 24
- Media view, 14
- Media, remove, 25
- Memory requirements, 9
- Menu options, 15

Composer ME User Guide

- Movie tab, 33
- Movie, add new, 21
- MP3, 12
- MPEG, 2
- MR3, 8
- Music, add new, 22
- Network file storage, 15
- Network requirements, 9
- Network share, access, 31
- New media, 7
- New Playlist, 17
- Playlist, create new, 31
- Playlist, delete songs, 32
- Processor requirements, 9
- Purpose of document, 5
- Radio stations, add, 27
- Refresh Composer ME, 11
- Refresh Director list, 14
- Refresh Navigators, 16
- Refresh screen, 16
- Related Documents, 5
- Remove media, 25
- Rename Playlist, 17
- Requirements, 9
- Rhapsody, 31
- Scan media, 14, 19
- Scan Now, 25
- Scanning
 - iTunes, 24
 - Schedule, 24
 - USB drive, 24
 - Windows Media Player, 24
- Search dialog, 23
- Search Results window, 23
- Software not supported, 6, 7
- Software requirements, 9
- Sony Disc Changer, auto-scan, 24
- Start Composer ME, 10
- Stop Scan, 25
- Stored media, scan, 14
- Test media, 25
- UHF/VHF, 15, 25
- UHF/VHF pane, 26
- Unprotected format, media storage devices, 30
- USB drive
 - scan, 24
 - using, 30
- USB port, 30
- Video requirements, 9
- What's new, 6
- Windows 7, 9
- Windows Media Player, 8
- Windows Vista, 9
- Windows XP, 9
- WMA, 12
- WMA format, 7