



## Control4® MyHome® App Quick Setup

### Control your system from your mobile devices or tablet

Control4® MyHome® lets you manage and interact with your Control4 system using your favorite Android™ and iOS smartphones, tablets, PCs, or Mac® computers. The MyHome apps for your devices are free, but they do require a MyHome license which you can get from your dealer.

### What you need

Setup is easy. You probably won't need your dealer's help, but you will need:

- A Control4 controller.
- A MyControl4 account created with your email address and password. If you don't have this information, contact your Control4 dealer or see *MyControl4 Account Quick Setup for Consumers*.
- A Control4 MyHome license (included with new controllers purchased after April 2013).
- A MyHome iPhone®, iPad®, Android, or PC/Mac app v2.4 or later (OS 2.1 to OS 2.5.3). You can download the latest MyHome app for iPhone, iPad, or Android from your devices' app stores or download the MyHome app for PC/Mac from your MyControl4 account.
- If you're using OS 2.5.3 or earlier, use the MyHome app rather than the Control4 app which is in OS 2.6.0 and later. See the *Control4 App Quick Reference* for details.

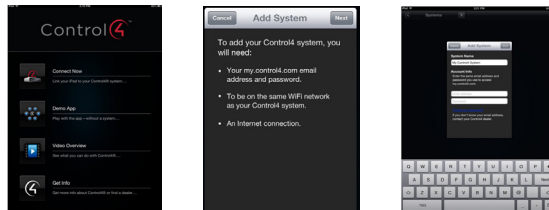
### What you can control

- Manage lighting, audio, video, security, temperature, and more on your home or business's WiFi network.
- Use your smartphone and 4Sight™ with Anywhere Access to manage your home while you're away (4Sight required).

Control4™

## First-time setup

- 1 Search for and download the Control4 MyHome app for your iPad, iPhone, or Android from its app store. The MyHome app for a PC or Mac uses the Adobe Air-compatible app that corresponds with your Control4 operating system version. You can download that app from your MyControl4 account (**My Software > Downloads**).
- 2 Start the MyHome app on your device. Make sure the device that is running MyHome is on the same WiFi network as your Control4 system, and that you have an Internet connection.
- 3 At the 'Welcome' screen, tap **Connect**.



- 4 Follow the instructions on the 'Add System' screen, and then tap **Next**.
- 5 In 'Add System' give your system a friendly name (for example, **Home**) or use the default.
- 6 Enter the email address and password tied to your MyControl4 account. Use the device's keyboard to enter the information, and then tap **Next**. The app will find, connect to, and configure itself with your Control4 system. You're finished!

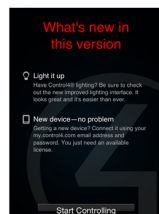
If the MyHome app returns a message that it can't find the system on the network, see "Can't find your system?" in this guide.

## Update an existing MyHome app

If you've previously set up your MyHome app, and then updated the app, your previous configuration is preserved.

- Your app store will notify you of updates if you have an iPad, iPhone, or Android. To get the updates, please visit the app store for your device.
- To update your MyHome app on a PC or Mac computer, download the app from your MyControl4 account at [customer.control4.com](http://customer.control4.com) (**My Software > Downloads**). The version of the app should match the version of your system.

- 1 The first time you launch the new app you may see a 'What's new in this version' screen. Tap **Start Controlling**, and then you can control your lights, music, and so on.



- 2 Here are some things you can do in the System and Settings tabs:
  - To change to another system, tap **Settings** on the House screen, and use the **System** tab.
  - To configure settings, use the **Settings** tab.

See the Control4 *MyHome Setup Guide for Homeowners* for complete details.

### Can't find your system?

If the MyHome app doesn't locate your system, here are some tips to get you connected.

- Select **Retry** to have the app attempt to find your system again. In some cases, it may just take a little more time to discover your system.
- If your MyHome app still can't find your system, try the **Troubleshoot** option which will walk you through a wizard.
  - Determine if you are in the same location and on the same WiFi network as your controller. If true, it's likely that your network is configured so that the app can't discover your system. In this case, select **Yes**. You'll need to enter the **IP address** of your system (your dealer can give you the address).
  - If you are **NOT** in the same location as your system (for instance, you have a system installed in a second home and you are not at that home), respond **No**. This will save the configuration. To complete the setup, select this system when you are in the same location as the system you want to connect to.
- If you've updated your system from a previous release, MyHome will ask for your MyControl4 account credentials the first time you try to access your home remotely.
- If you lose or sell your smartphone, you can log into your MyControl4 account at customer.control4.com and disable the device (select **My Devices**, the device, and then select **Disable**).

### 4Sight with Anywhere Access, enabled by 4Sight

If you have a 4Sight subscription (sold separately) with MyHome, you can take advantage of 4Sight with Anywhere Access. 4Sight is a Control4 service that provides remote access to your system so you can connect to and manage your system from anywhere in the world. 4Sight also provides just-in-time updates and web-browser access from your PC or Mac computer.

- Remotely access and manage your system from your smartphone or tablet over a 3G, 4G, or remote WiFi network connection. Control4 systems that have 4Sight are enabled automatically for remote access. Your 4Sight with Anywhere Access expiration date appears on your System page in MyHome.
- Use your smartphone or tablet away from your home the same way you use your other Control4 interfaces at home.

Check with your dealer for details or see *MyHome Setup Guide for Homeowners* at <http://www.control4.com/owners/resources>.